

MR. BRYANT TOH
H/P : 017-877 9458

MR. ERIC ONG
H/P : 016-919 9920

MR. PETER
H/P : 012-233 3861

MR. ONG
H/P : 012-549 7710

MR. ALEX
H/P : 012-713 0515

Email: work@froscoweb.com
(CENTRAL REGION)

Email: sales@froscoweb.com
(CENTRAL REGION)

Email: work@froscoweb.com
(EAST MALAYSIA &
INTERNATIONAL)

Email: sales@froscoweb.com
(NORTHERN REGIONAL OFFICE)

Email: sales@froscoweb.com
(SOUTHERN REGIONAL OFFICE)

ENVIRONMENTAL ECO-FRIENDLY INTERCEPTOR WASTE SYSTEM

**SIRIM TESTED , AUTHORITY RECOGNISED AND
CONSULTANTS RECOMENDED**



We Reserve All Intellectual Property
Rights In Our Froscow Product

FROSGOLD

Website : www.froscoweb.com



GREEN ENVIRONMENT

MESSAGE FROM MANAGEMENT

Engineers and architects of today have shown an increasing concerns over the 'pollution' and problems caused by accumulated grease, oily, grit, silt, lint, sludge, plastic and sand waste in drain lines and the subsequent discharge into sewage disposal plants, rivers, lakes, streams and other waterways.

In order to avoid the direct passage of above solid and other solid waste into the drainage system, it is necessary to provide a Environment Eco-Friendly . Waste interceptor system for a more effective, hygienic and environmental friendly approach, which meets the need and demand of today's modern living.

We are glad to introduce our Environmental Eco-Friendly Waste Interceptor System :

- 1) Stormceptor (Solid /Silt / Grit / Sand)
- 2) Stormceptor Installation Concrete Sump Pit
- 3) Silt Trap
- 4) Adjustable Inlet / Outlet Position Storm Water Pollutant Trap
- 5) Storm Water Oil Interceptor
- 6) Wool / Hair / Laundry Interceptor
- 7) Salon Hair Trap
- 8) Sand Interceptor
- 9) F.O.G / Sludge Separator
- 10) Septic Tank
- 11) Stainless Steel Fabricated Rain Water Harvesting System
- 12) Car Wash Bay Separator
- 13) Low Height Multi-Compartments Stormceptor
- 14) Multiple Inlet Stormwater Separator
- 15) Concrete Cement Separator and Treatment System
- 16) Solid or Sludge Separator
- 17) Syphonic Storm Drain
- 18) Biomatic Grease Interceptor
- 19) Oil Interceptor
- 20) Neutralizing Tank
- 21) Dilution Recovery Trap
- 22) Sediment Interceptor

Accessories Products

- 1) Oil Skimmer / Floating Skimmer
- 2) Automatic Dosing Unit FV5000
- 3) Frosozyme 5 Litre Bottle Packaging
- 4) Grease / Oil / Sludge Alarm Sensor System

- SINCE 1986 -

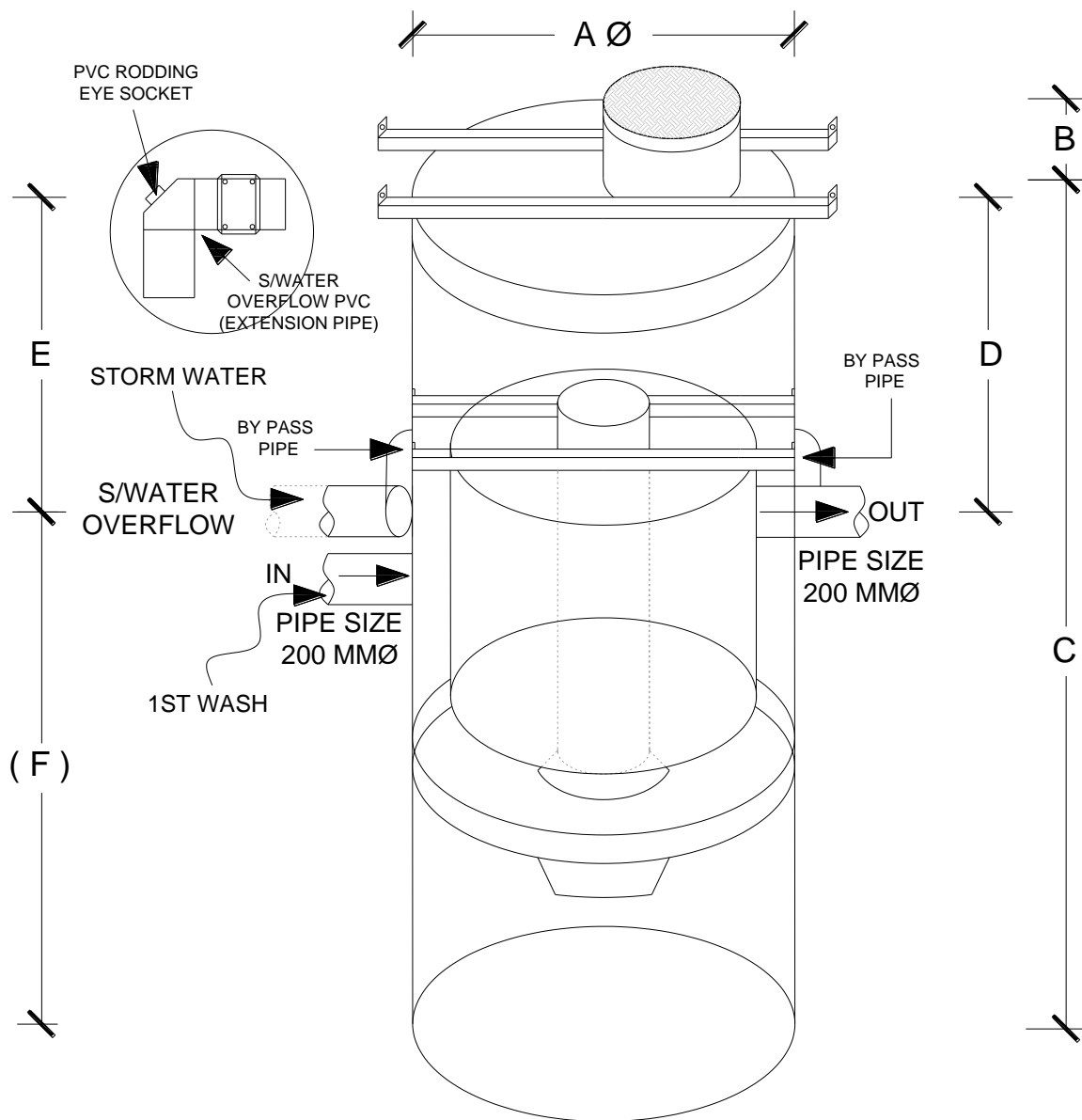
FROSGOLD

12, Jalan TIB 1/3, Taman Industri Bolton
68100 Batu Caves. Selangor Darul Ehsan
Tel : 603-6185 9262 (Hunting Line) / Fax : 603-6185 9279

Associated Brand : Frosco . Clearflow . Greywaterc. Fossotech

FROSGOLD

STORMCEPTOR (SOLID / SILT / GRIT / SAND)



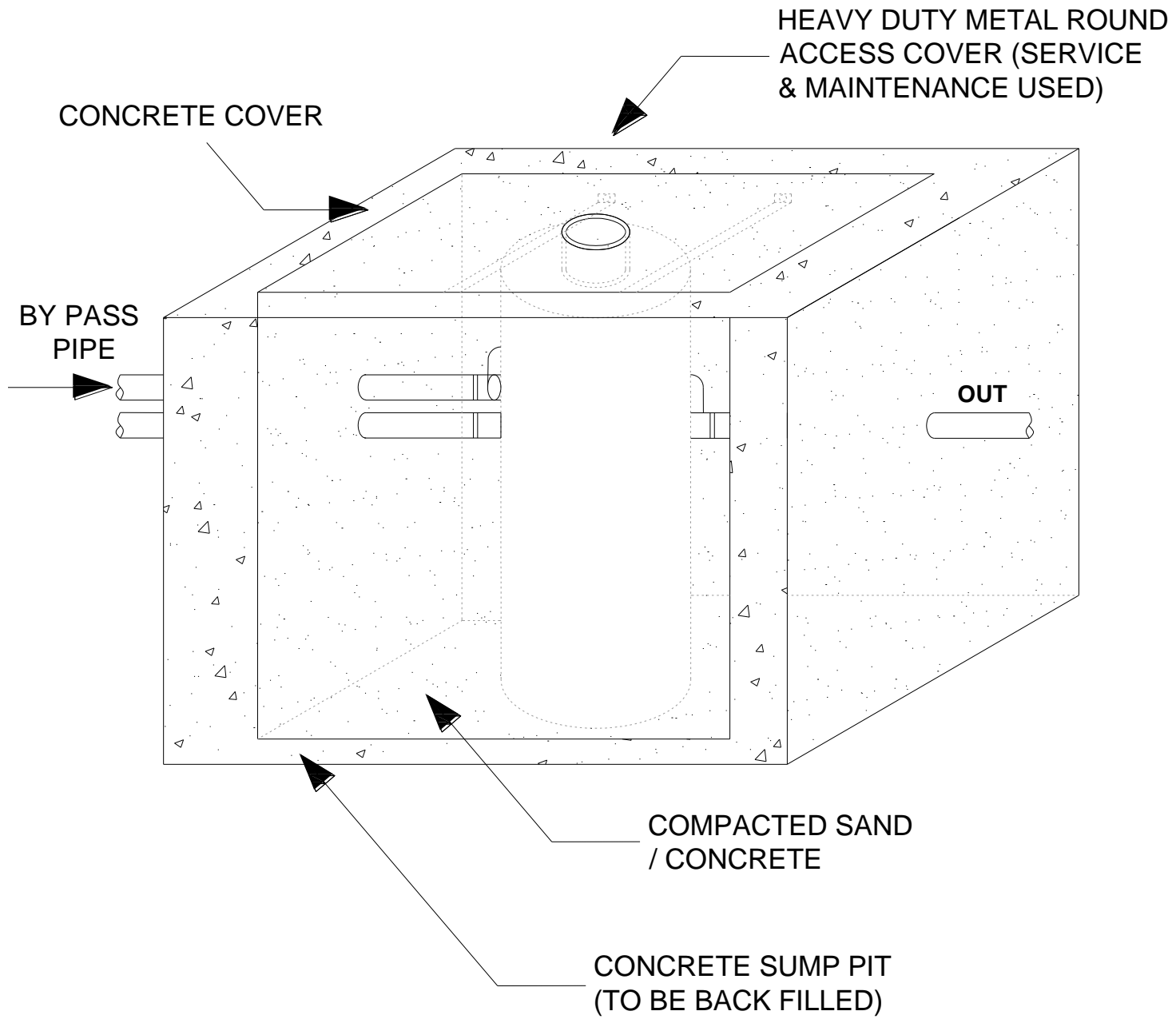
FROSGOLD

MODEL	FSC 835 XL /R
SIZE	A=(1500 mmØ) B=(300mm) C=(2300mm) D=(300mm) E=(300mm) F=(2000mm)
FLOWRATE	350 GPM
PIPE Ø	150 mmØ – 200 mmØ
APPROX WEIGHT FULL	3500 KG (TANK COME WITH WATER ONLY)
MATERIAL	STAINLESS STEEL PREFABRICATED TANK
NOTE : VARIES SIZE AVAILABLE SUBJECT TO THE FLOWRATE AND SITE CONDITION FOR PIPE POSITIONING	

In keeping with our policy of updating products we reserve the right
To make improvements or changes without notice.



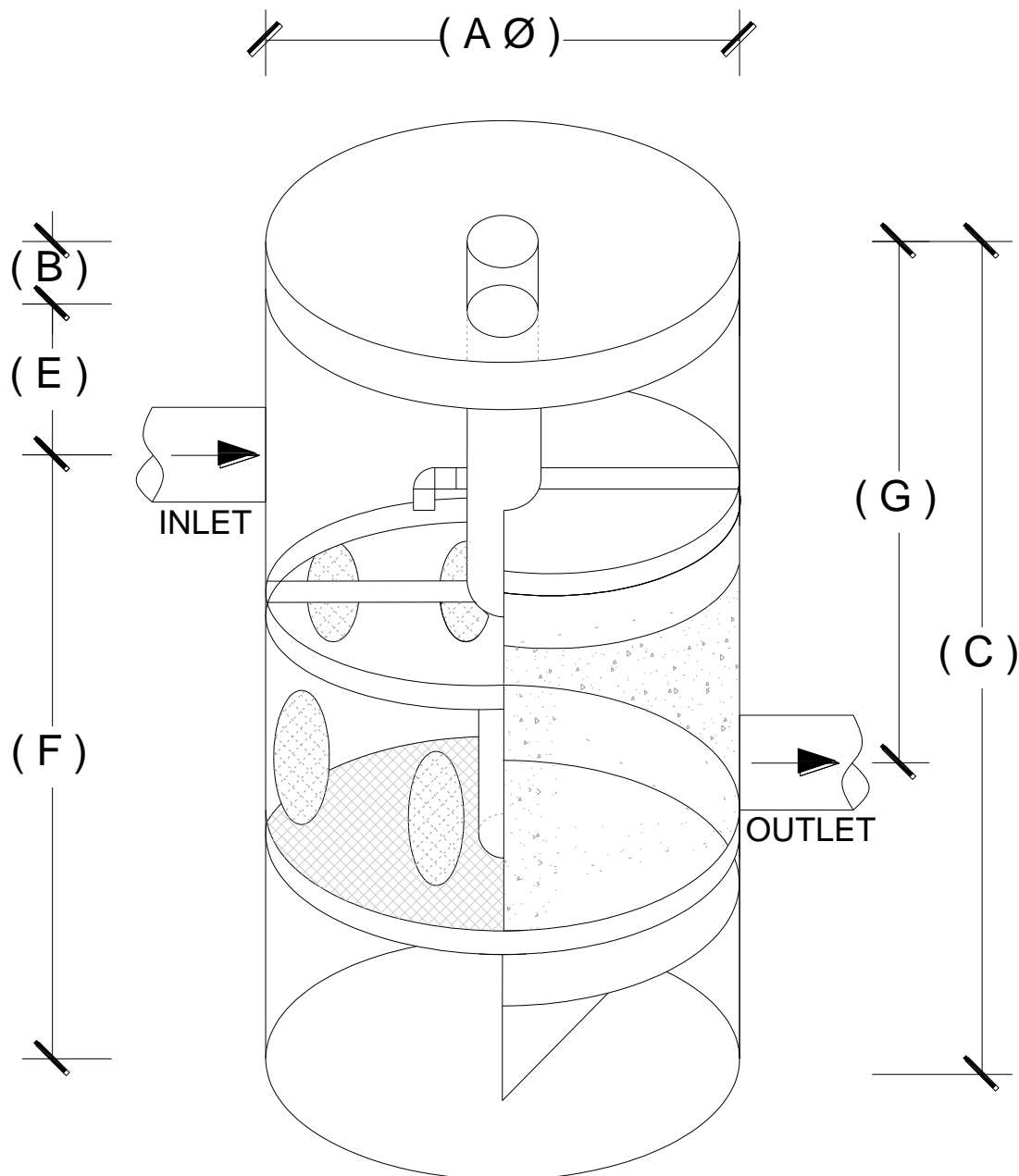
STORMCEPTOR INSTALLATION CONCRETE SUMP PIT



In keeping with our policy of updating products we reserve the right
To make improvements or changes without notice.

FROSGOLD

SILT TRAP

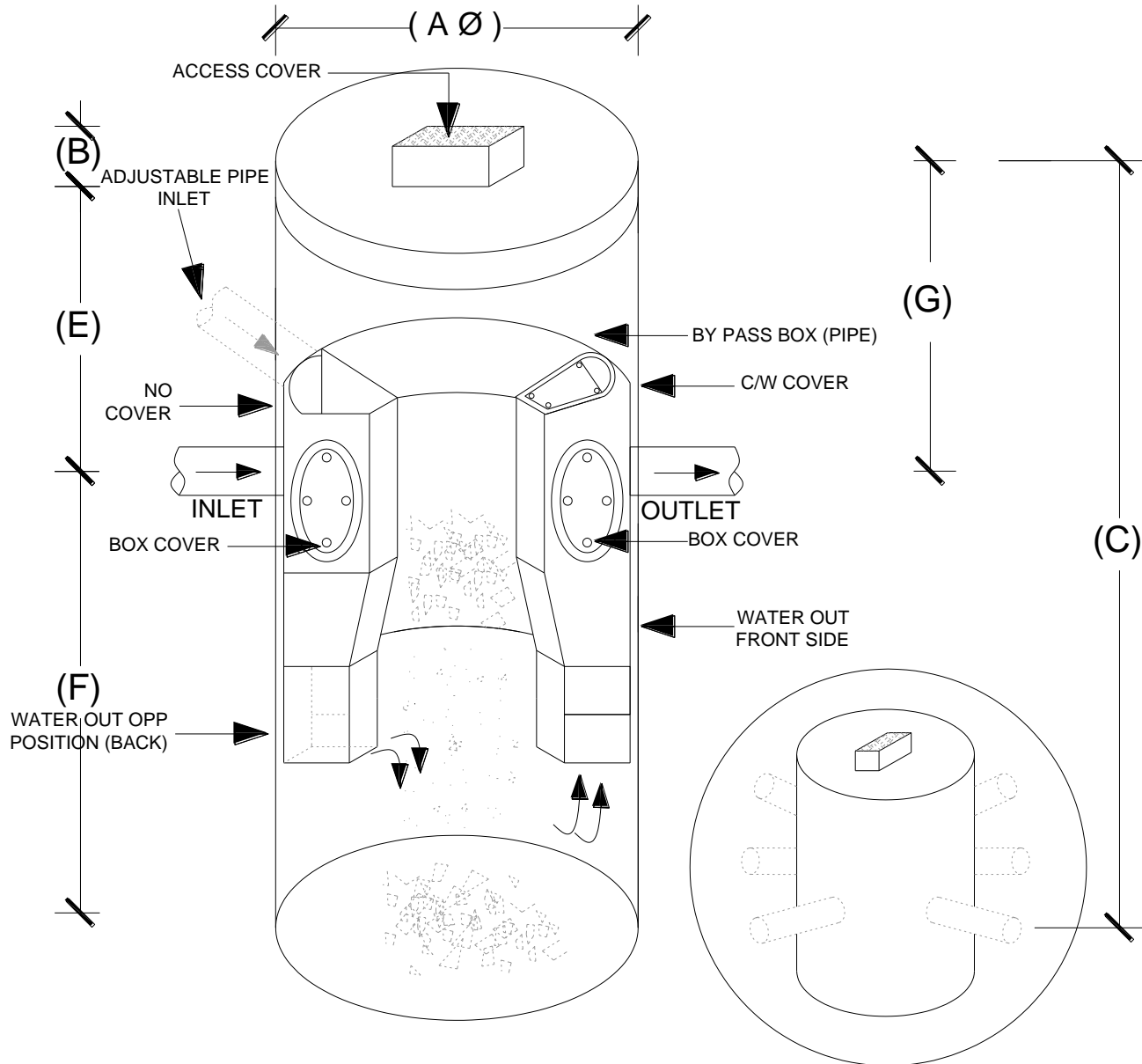


FROSGOLD

MODEL	FST 820 L/R
SIZE	A=(1000 mmØ) B=(300mm) C=(2000mm) D=(300mm) E=(300mm) F=(1700mm)
FLOWRATE	200 GPM
PIPE Ø	150 mmØ
APPROX WEIGHT FULL	1800 KG (TANK COME WITH WATER ONLY)
MATERIAL	STAINLESS STEEL PREFABRICATED TANK
NOTE : VARIES SIZE AVAILABLE SUBJECT TO THE FLOWRATE AND SITE CONDITION FOR PIPE POSITIONING	

In keeping with our policy of updating products we reserve the right
To make improvements or changes without notice.

ADJUSTABLE INLET / OUTLET POSITION STORM WATER POLLUTANT TRAP

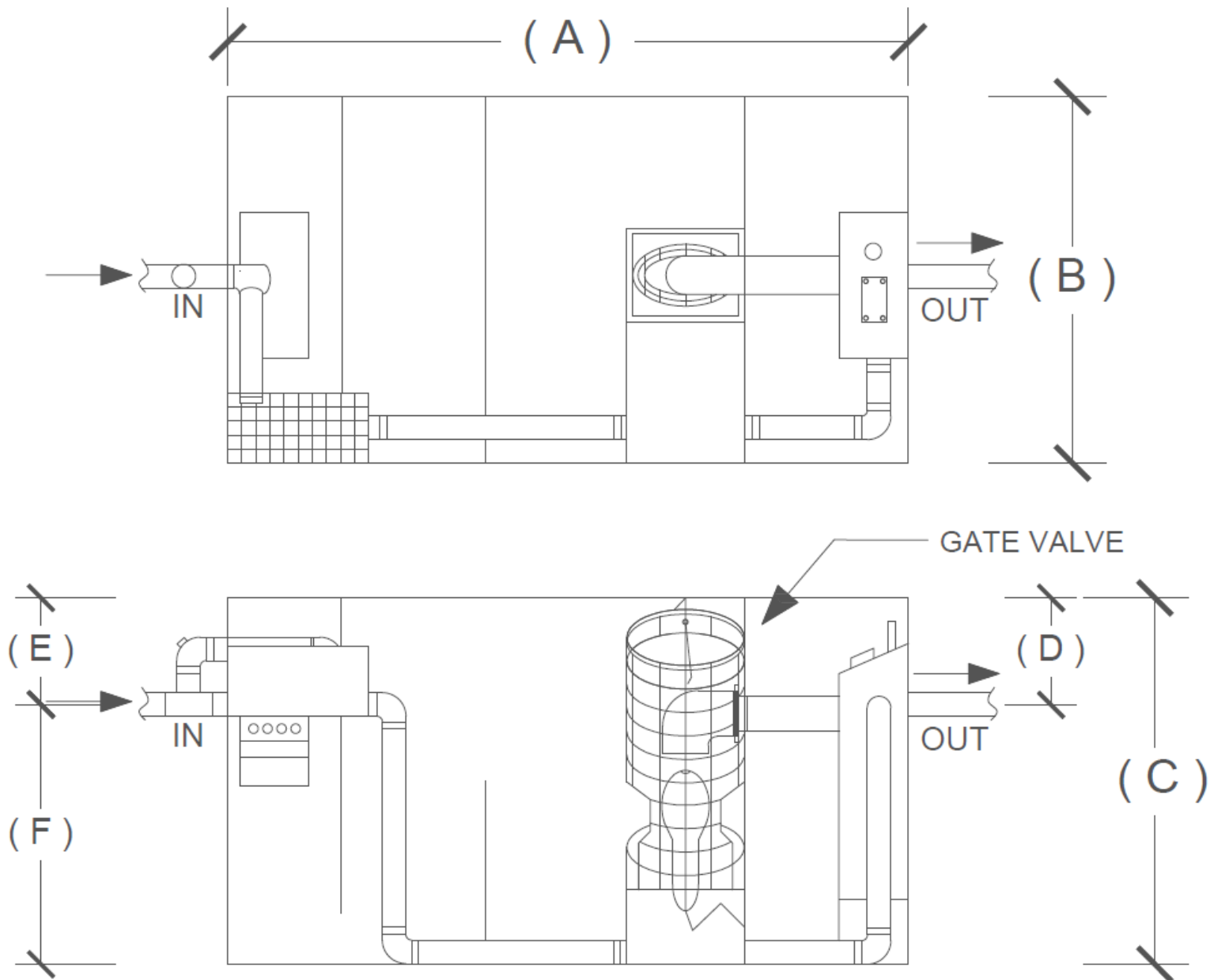


MODEL	FST 835 XL / APR
SIZE	A=(1500 mm \emptyset) B=(300mm) C=(2300mm) D=(300mm) E=(300mm) F=(2000mm)
FLOWRATE	350 GPM
PIPE \emptyset	150 mm \emptyset - 200 mm \emptyset
APPROX WEIGHT FULL	3500 KG (TANK COME WITH WATER ONLY)
MATERIAL	STAINLESS STEEL PREFABRICATED TANK
NOTE : VARIES SIZE AVAILABLE SUBJECT TO THE FLOWRATE AND SITE CONDITION FOR PIPE POSITIONING	

In keeping with our policy of updating products we reserve the right To make improvements or changes without notice.

FROSGOLD

STORM WATER OIL INTERCEPTOR



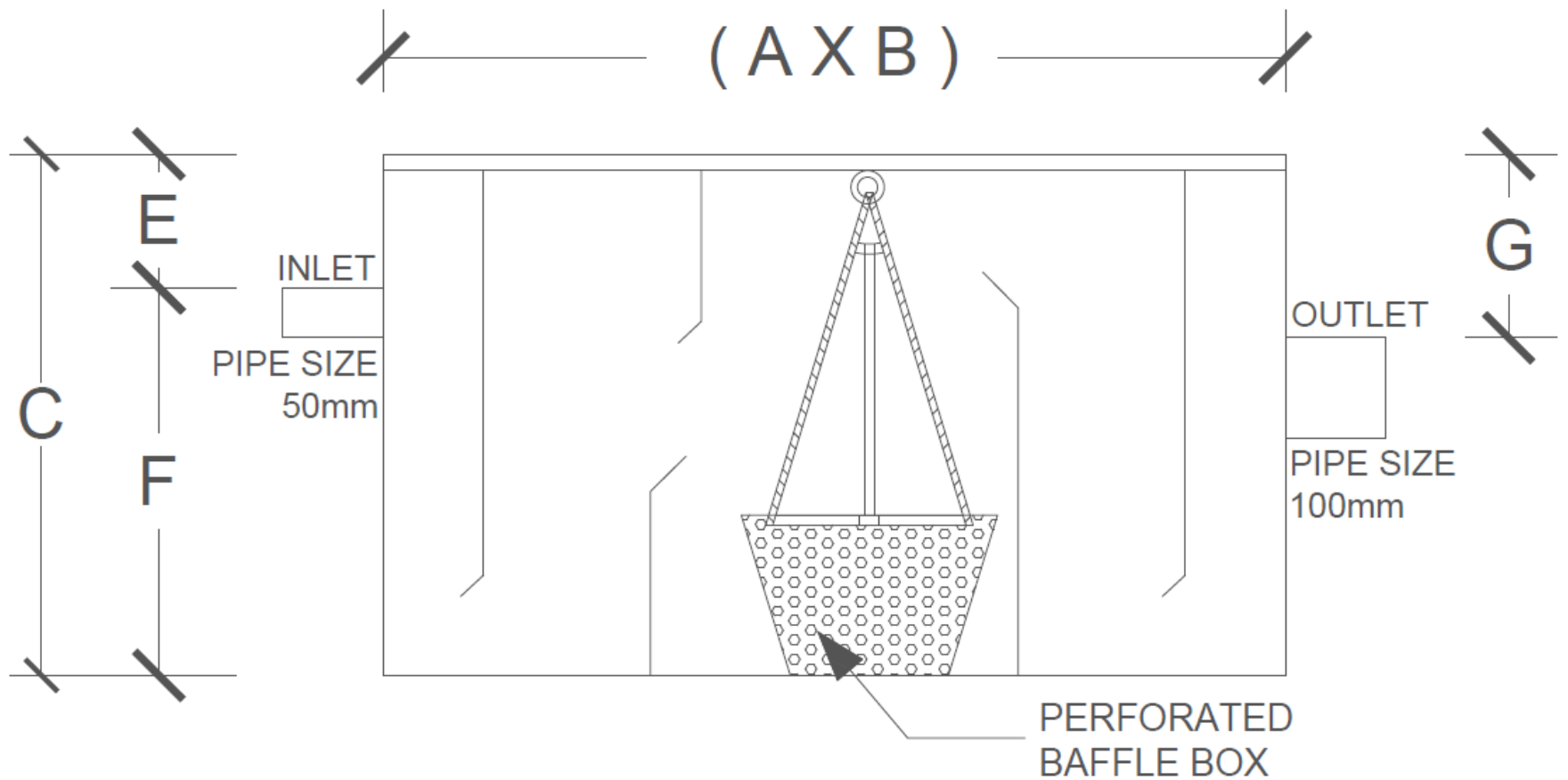
FROSGOLD

MODEL	FSC0860 XL / SQ
SIZE	A=(2250 mm) B=(1850mm) C=(2000mm) D=(500mm) E=(500mm) F=(1500mm)
FLOWRATE	600 GPM
PIPE Ø	200 mmØ
APPROX WEIGHT FULL	5800 KG (TANK COME WITH WATER ONLY)
MATERIAL	STAINLESS STEEL PREFABRICATED TANK
NOTE : VARIES SIZE AVAILABLE SUBJECT TO THE FLOWRATE AND SITE CONDITION FOR PIPE POSITIONING	

In keeping with our policy of updating products we reserve the right
To make improvements or changes without notice.

FROSGOLD

LINT / LAUNDRY INTERCEPTOR



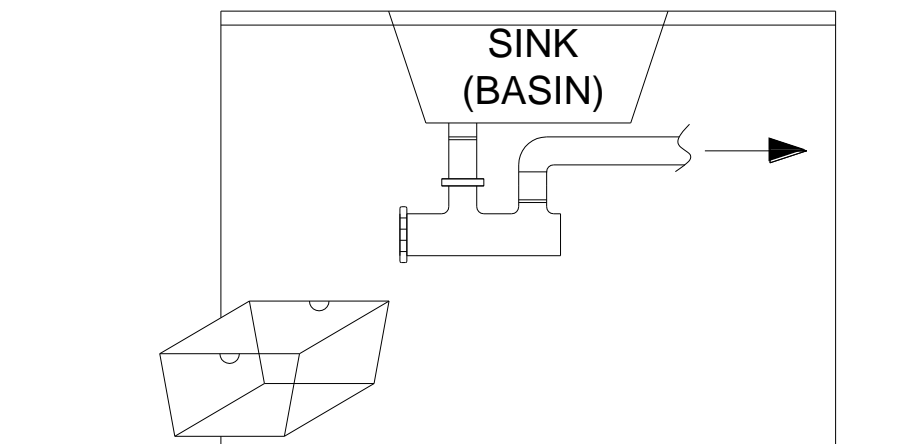
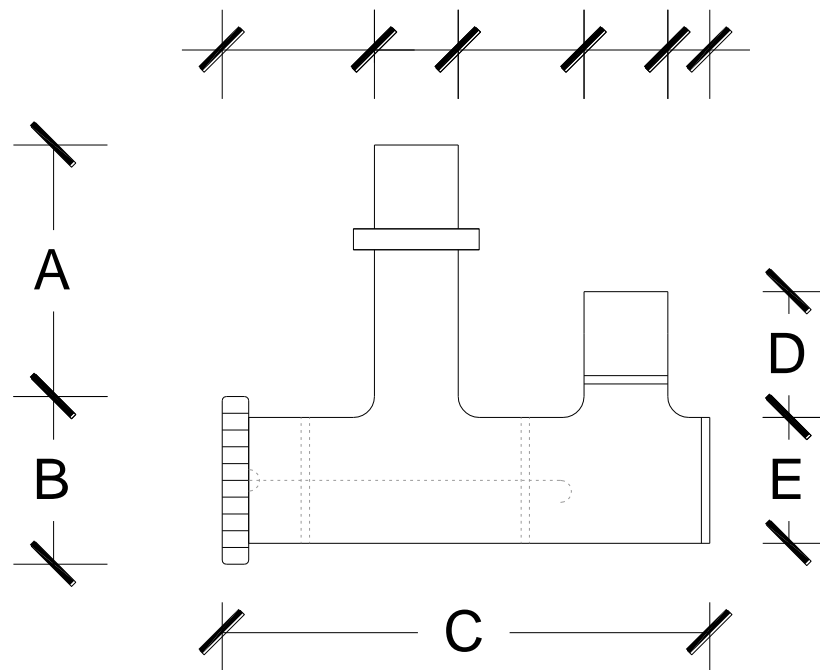
FROSGOLD

MODEL	FLC 100 L/SQ
SIZE	A=(1200mm) B=(900mm) C=(850mm) E=(200mm) F=(650mm) G=(225mm)
FLOWRATE	100 GPM
PIPE Ø	INLET = 50 mmØ / 75 mmØ / 100 mmØ OUTLET = 50 mmØ / 75 mmØ / 100 mmØ
APPROX WEIGHT FULL	750 KG (TANK COME WITH WATER ONLY)
MATERIAL	STAINLESS STEEL PREFABRICATED TANK
NOTE : VARIES SIZE AVAILABLE SUBJECT TO THE FLOWRATE AND SITE CONDITION FOR PIPE POSITIONING	

In keeping with our policy of updating products we reserve the right
To make improvements or changes without notice.

FROSGOLD

SALOON HAIR TRAP



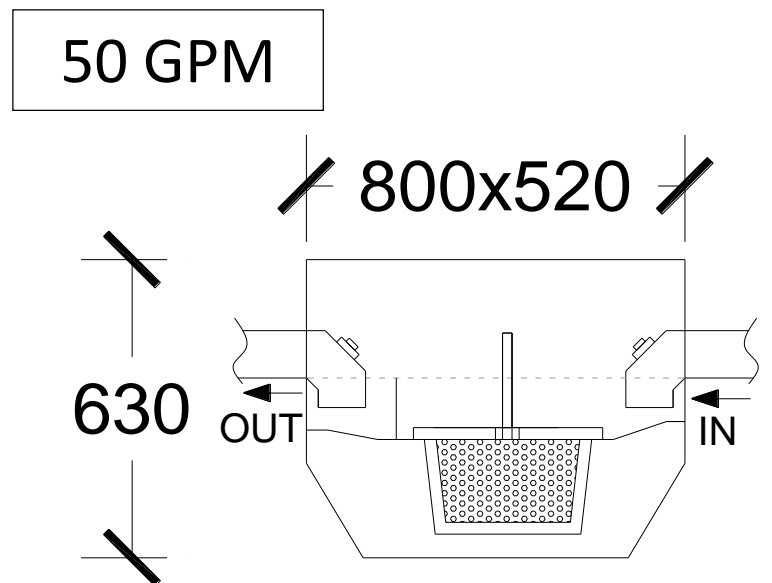
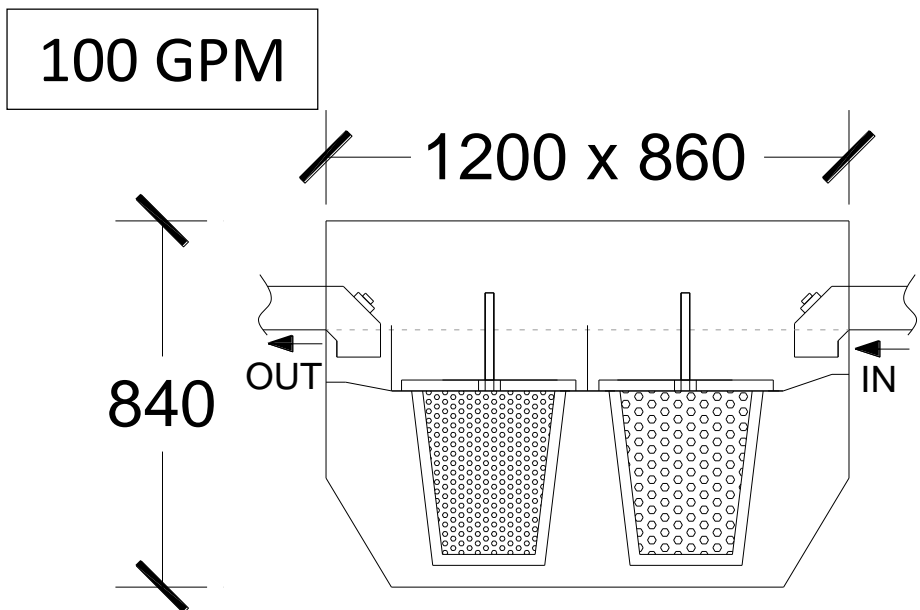
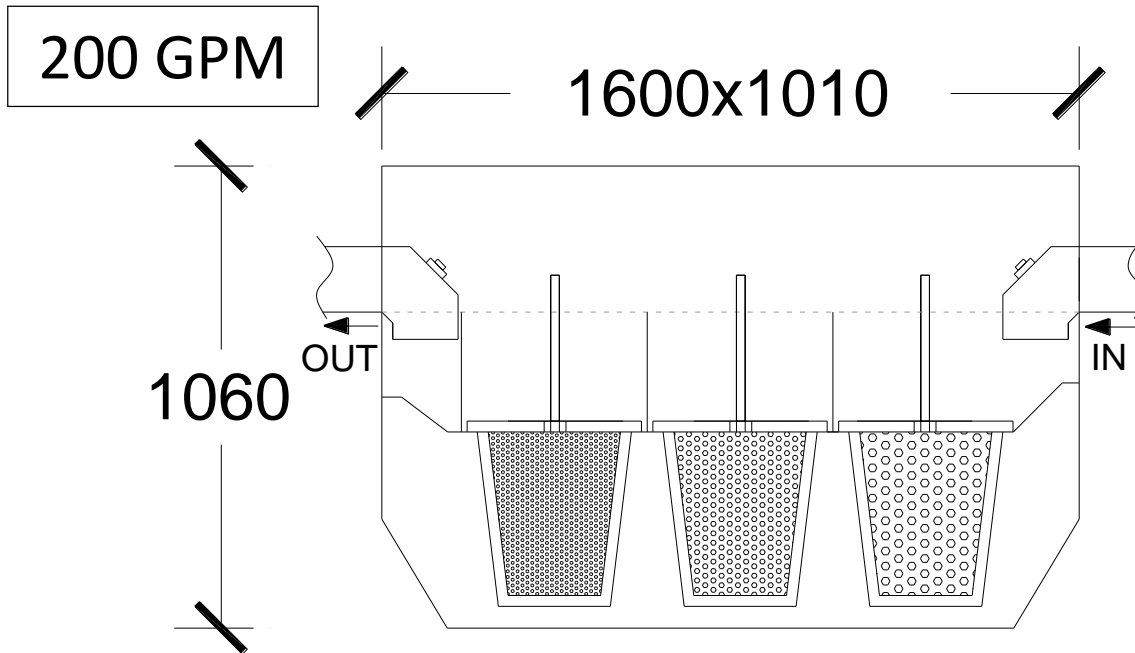
FROSGOLD

MODEL	FHT050 S/SR
SIZE	A=(70 mm) B=(50mm) C=(200mm) D=(50mm) E=(50mm)
FLOWRATE	0.5 L/s
PIPE Ø	50 mmØ
APPROX WEIGHT FULL	20 KG (TANK COME WITH WATER ONLY)
MATERIAL	STAINLESS STEEL PREFABRICATED TANK
NOTE : VARIES SIZE AVAILABLE SUBJECT TO THE FLOWRATE AND SITE CONDITION FOR PIPE POSITIONING	

In keeping with our policy of updating products we reserve the right
To make improvements or changes without notice.

FROSGOLD

SAND SEPERATOR



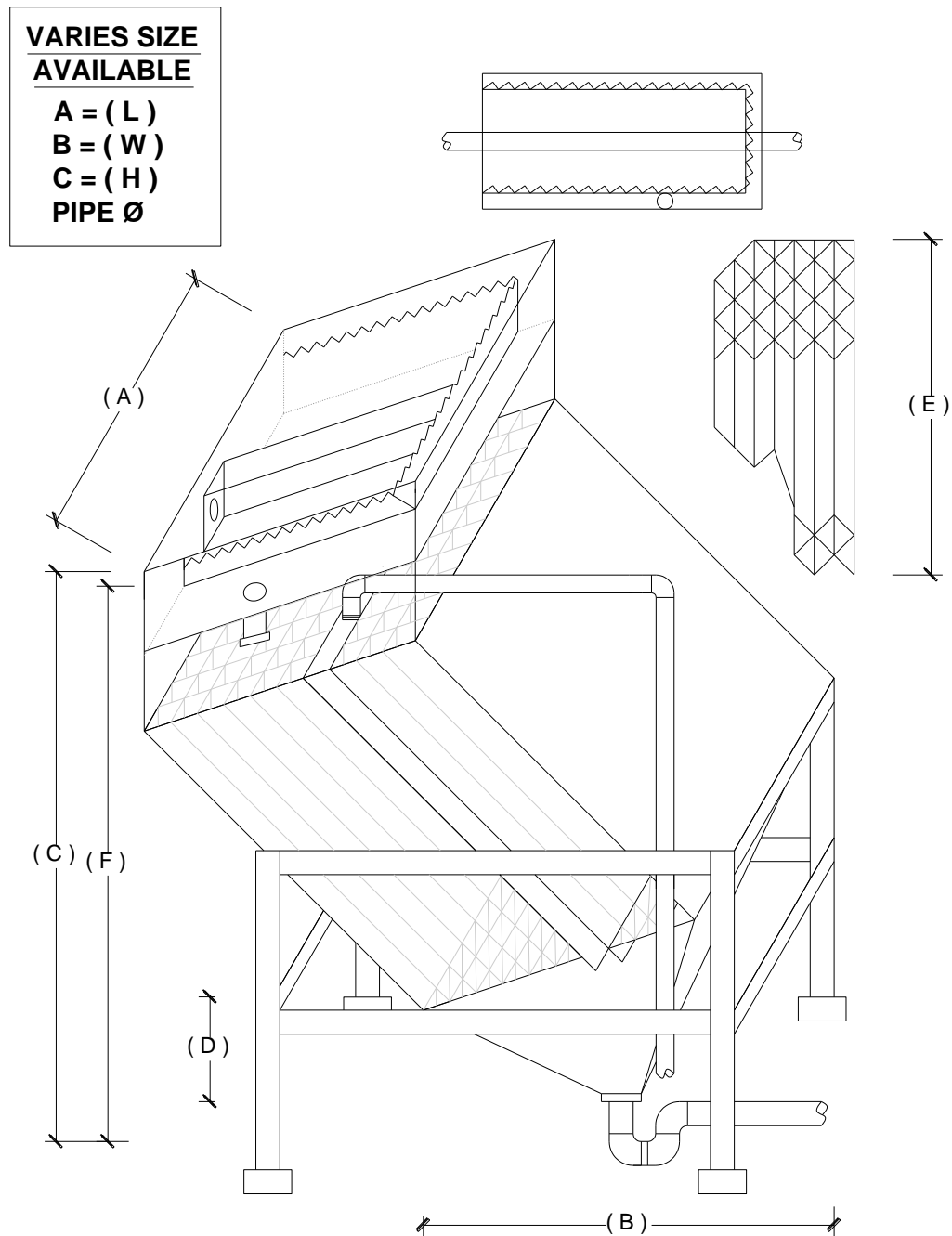
FROSGOLD

MODEL	FSS 200 L/SQ , FSS 100 L/SQ , FSS 50 L/SQ
FLOWRATE	200 GPM , 100 GPM , 50 GPM
PIPE Ø	150 mmØ , 100 mmØ
APPROX WEIGHT FULL	1000 KG , 500 KG , 250 KG
MATERIAL	STAINLESS STEEL PREFABRICATED TANK (COME WITH 1,2 OR 3 BASKET)
NOTE : VARIES SIZE AVAILABLE SUBJECT TO THE FLOWRATE AND SITE CONDITION FOR PIPE POSITIONING	

In keeping with our policy of updating products we reserve the right
To make improvements or changes without notice.

FROSGOLD

F.O.G / SLUDGE SEPARATOR



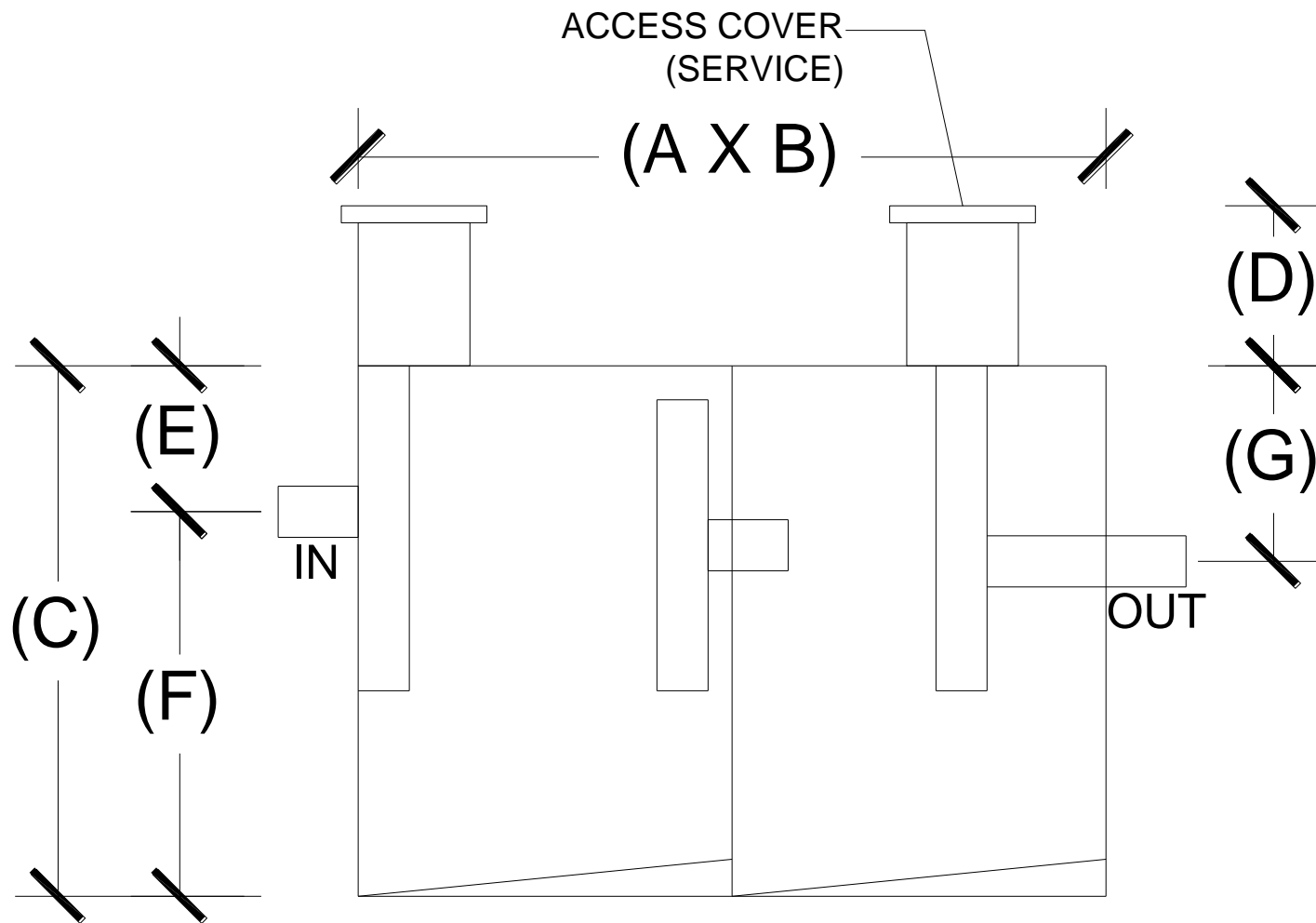
FROSGOLD

MODEL	FOS 890 XL/HSQ
SIZE	A=(2000 mm) B=(2000mm) C=(3000mm) D=(500mm) E=(500mm) F=(2700mm)
FLOWRATE	900 GPM
PIPE Ø	150 mmØ - 200 mmØ
APPROX WEIGHT FULL	8000 KG (TANK COME WITH WATER ONLY)
MATERIAL	STAINLESS STEEL PREFABRICATED TANK
NOTE : VARIES SIZE AVAILABLE SUBJECT TO THE FLOWRATE AND SITE CONDITION FOR PIPE POSITIONING	

In keeping with our policy of updating products we reserve the right
 To make improvements or changes without notice.

FROSGOLD

SEPTIC TANK



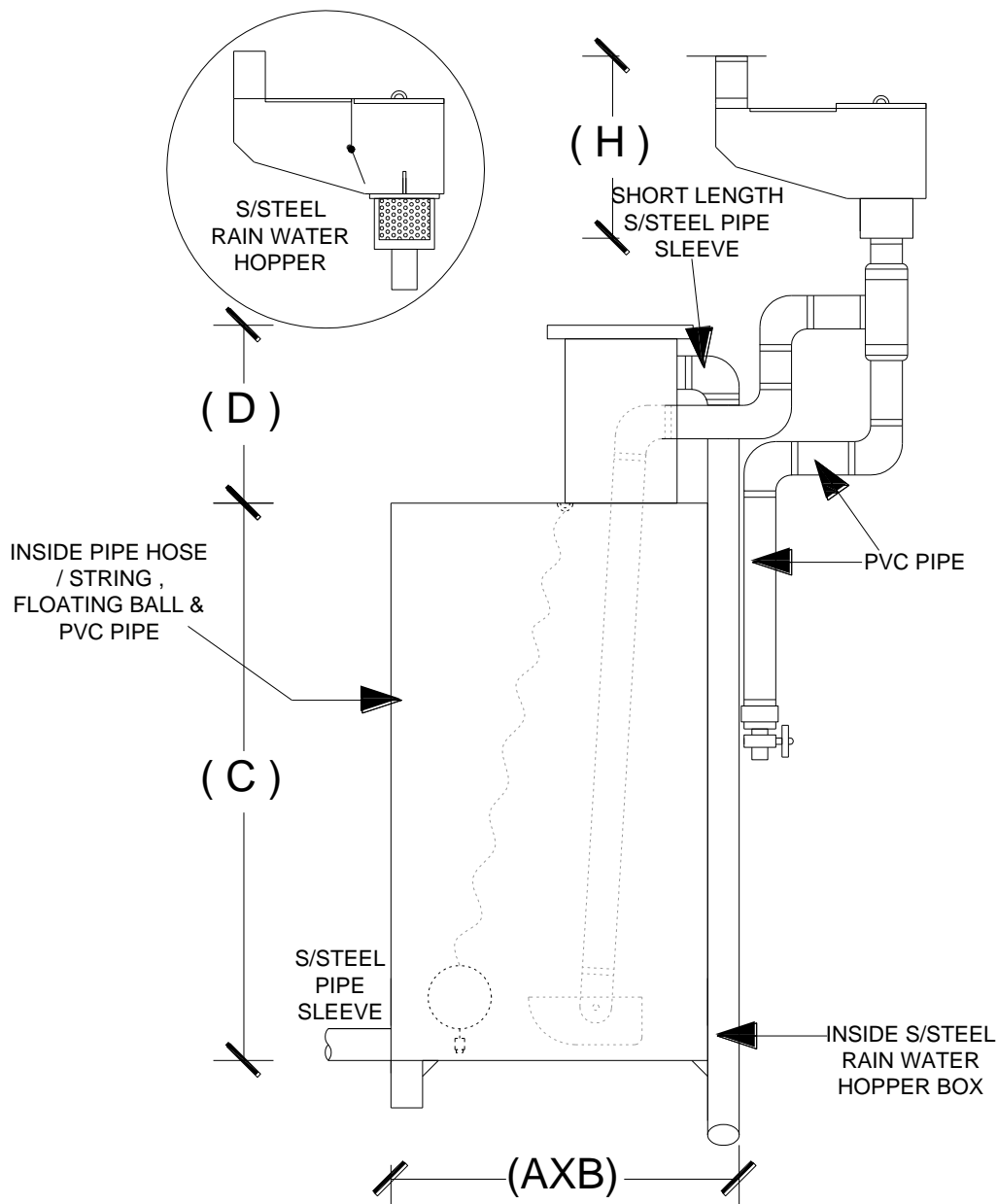
FROSGOLD

MODEL	FST 830 XL/SQ
SIZE	A=(1800 mm) B=(1200mm) C=(1200mm) D=(SITE CONDITION) E=(200mm) F=(1000mm) G=(250mm)
FLOWRATE	300 GPM
PIPE Ø	150 mmØ
APPROX WEIGHT FULL	2100 KG (TANK COME WITH WATER ONLY)
MATERIAL	STAINLESS STEEL PREFABRICATED TANK
NOTE : VARIES SIZE AVAILABLE SUBJECT TO THE FLOWRATE AND SITE CONDITION FOR PIPE POSITIONING	

In keeping with our policy of updating products we reserve the right
To make improvements or changes without notice.

FROSGOLD

STAINLESS STEEL PREFABRICATED RAIN WATER HARVESTING SYSTEM



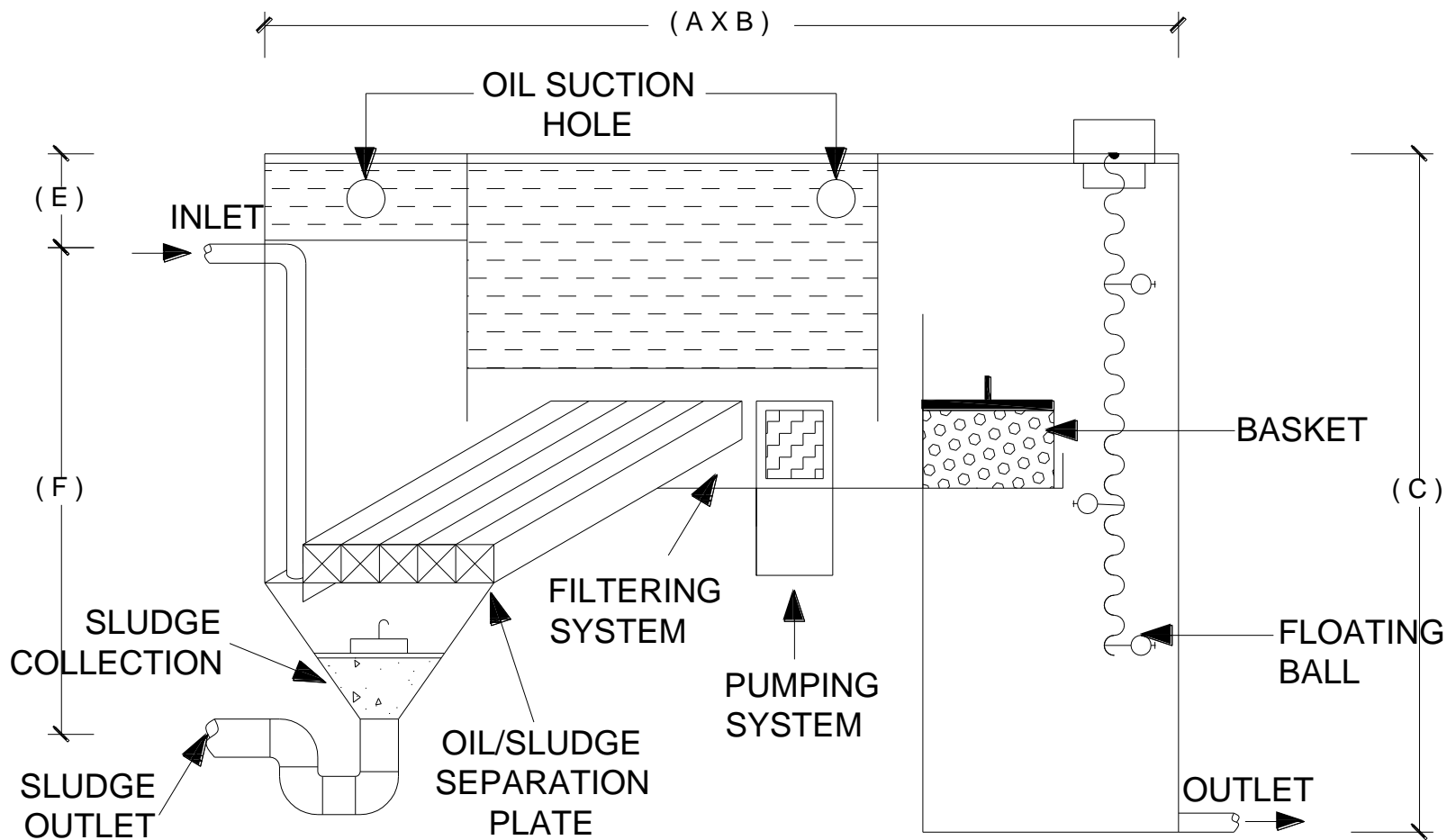
FROSGOLD

MODEL	FRH 810 XL/SQH
SIZE	A=(1000 mm) B=(800mm) C=(2000mm) D=(500mm) H=(350mm)
FLOWRATE	VOLUME = 1.6M ³
PIPE Ø	150 mmØ
APPROX WEIGHT FULL	2500 KG (TANK COME WITH WATER ONLY)
MATERIAL	STAINLESS STEEL PREFABRICATED TANK
NOTE : VARIES SIZE AVAILABLE SUBJECT TO THE FLOWRATE AND SITE CONDITION FOR PIPE POSITIONING	

In keeping with our policy of updating products we reserve the right
To make improvements or changes without notice.

FROSGOLD

CAR WASH BAY SEPARATOR

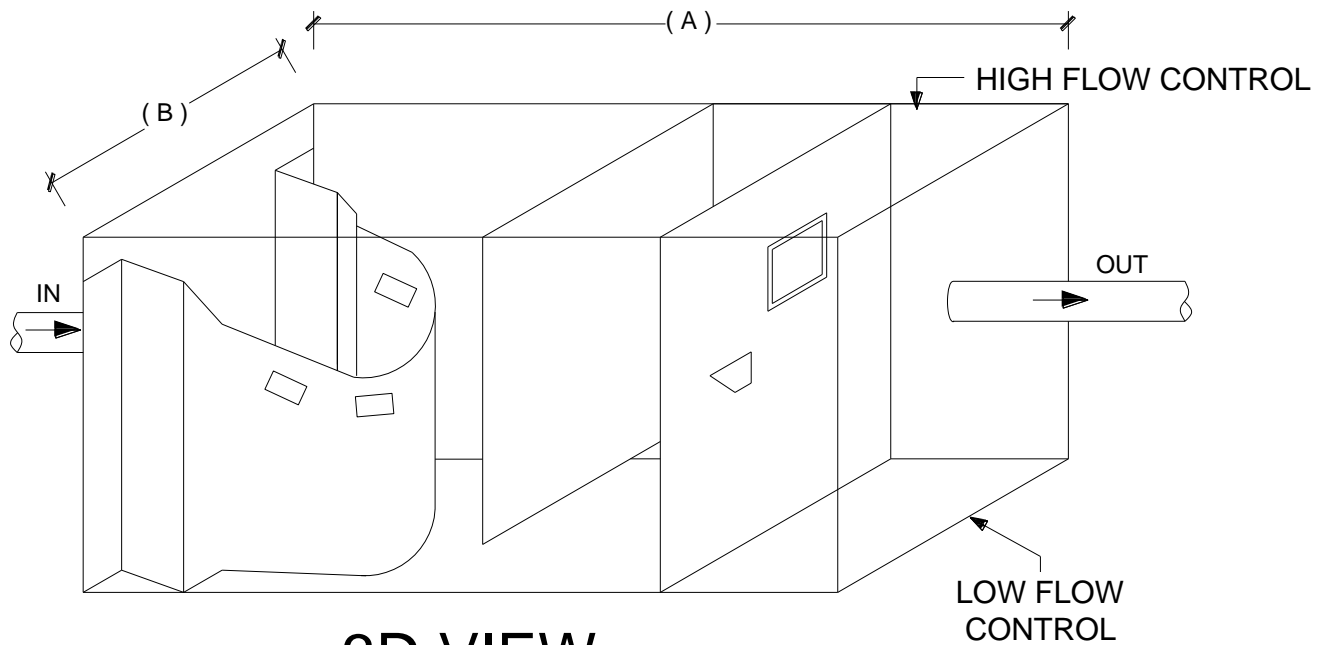


FROSGOLD

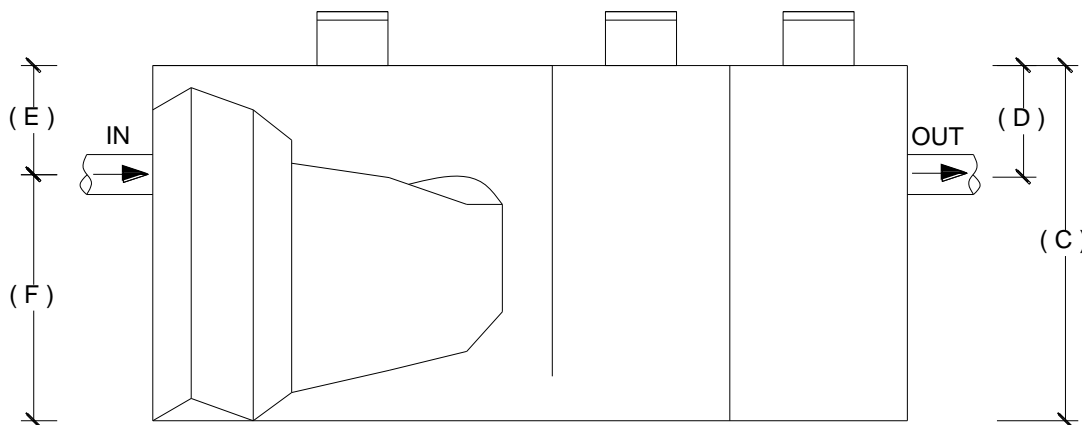
MODEL	FCW 855 XL/SQH
SIZE	A=(2500 mm) B=(1500mm) C=(2000mm) D=(300mm) H=(350mm) H=(1350mm)
FLOWRATE	400 GPM
PIPE Ø	150 mmØ
APPROX WEIGHT FULL	3000 KG (TANK COME WITH WATER ONLY)
MATERIAL	STAINLESS STEEL PREFABRICATED TANK
NOTE : VARIES SIZE AVAILABLE SUBJECT TO THE FLOWRATE AND SITE CONDITION FOR PIPE POSITIONING	

In keeping with our policy of updating products we reserve the right
To make improvements or changes without notice.

LOW HEIGHT MULTI COMPARTMENTS STORMCEPTOR



3D VIEW



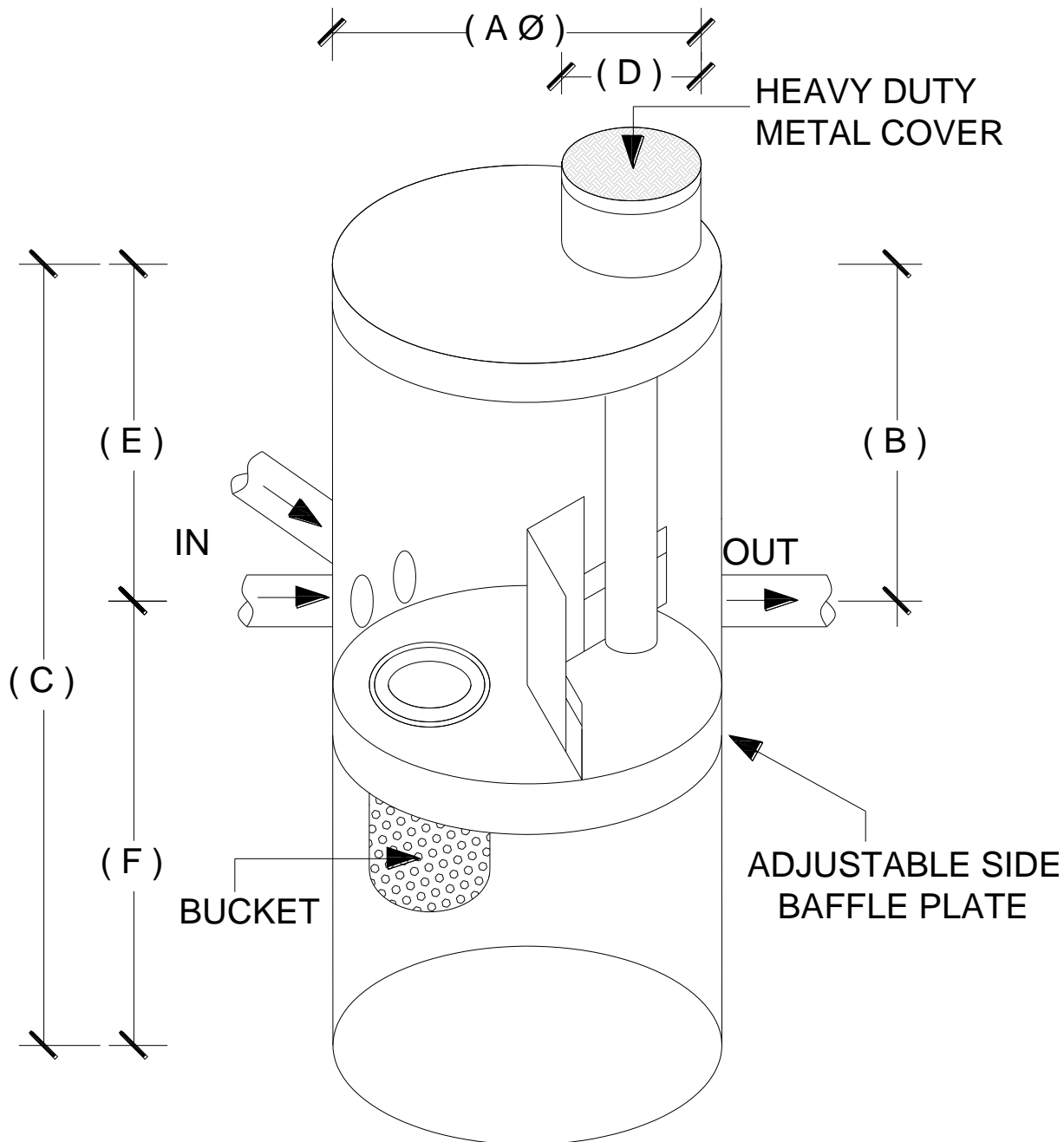
SECTION VIEW

MODEL	FSC 865 XL/SQMC
SIZE	A=(2800 mm) B=(2000mm) C=(2200mm) D=(500mm) E=(500mm) F=(1700mm)
FLOWRATE	650 GPM
PIPE Ø	150 mmØ - 200 mmØ
APPROX WEIGHT FULL	5000 KG (TANK COME WITH WATER ONLY)
MATERIAL	STAINLESS STEEL PREFABRICATED TANK
NOTE : VARIES SIZE AVAILABLE SUBJECT TO THE FLOWRATE AND SITE CONDITION FOR PIPE POSITIONING	

In keeping with our policy of updating products we reserve the right
To make improvements or changes without notice.

FROSGOLD

MULTIPLE INLET STORMWATER SEPARATOR



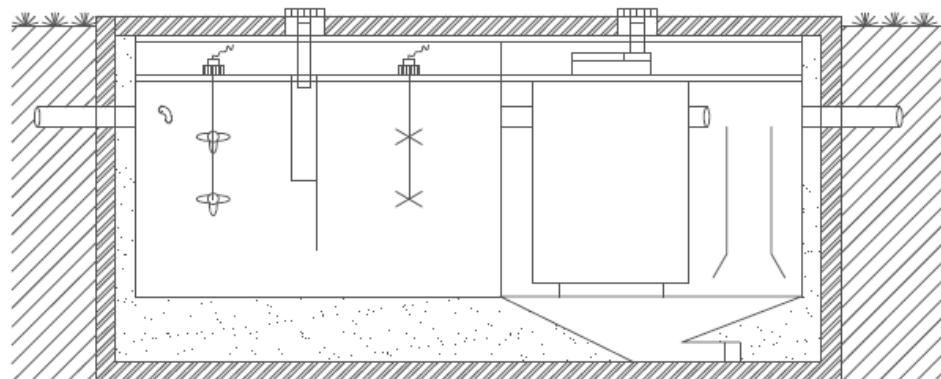
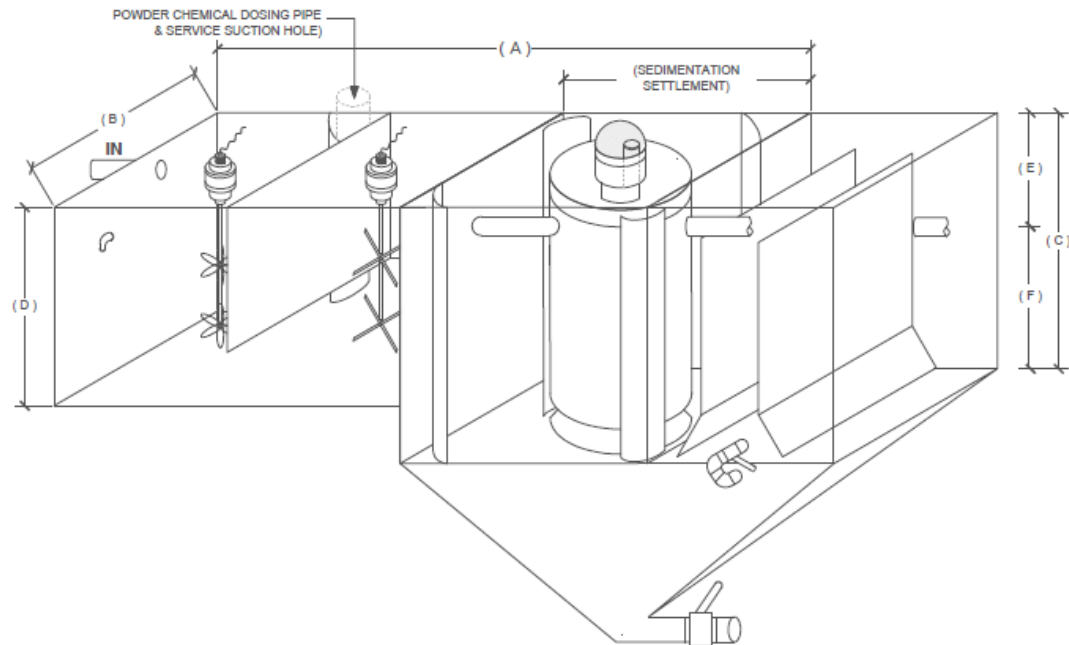
FROSGOLD

MODEL	FSC 815 L/R
SIZE	A=(950 mm) B=(350mm) C=(1500mm) D=(300mm) E=(350mm) F=(1150mm)
FLOWRATE	150 GPM
PIPE \varnothing	100 mm \varnothing
APPROX WEIGHT FULL	1100 KG (TANK COME WITH WATER ONLY)
MATERIAL	STAINLESS STEEL PREFABRICATED TANK
NOTE : VARIES SIZE AVAILABLE SUBJECT TO THE FLOWRATE AND SITE CONDITION FOR PIPE POSITIONING	

In keeping with our policy of updating products we reserve the right
To make improvements or changes without notice.

FROSGOLD

CONCRETE CEMENT SEPARATOR AND TREATMENT SYSTEM / CHEMICAL HOLDING TANK



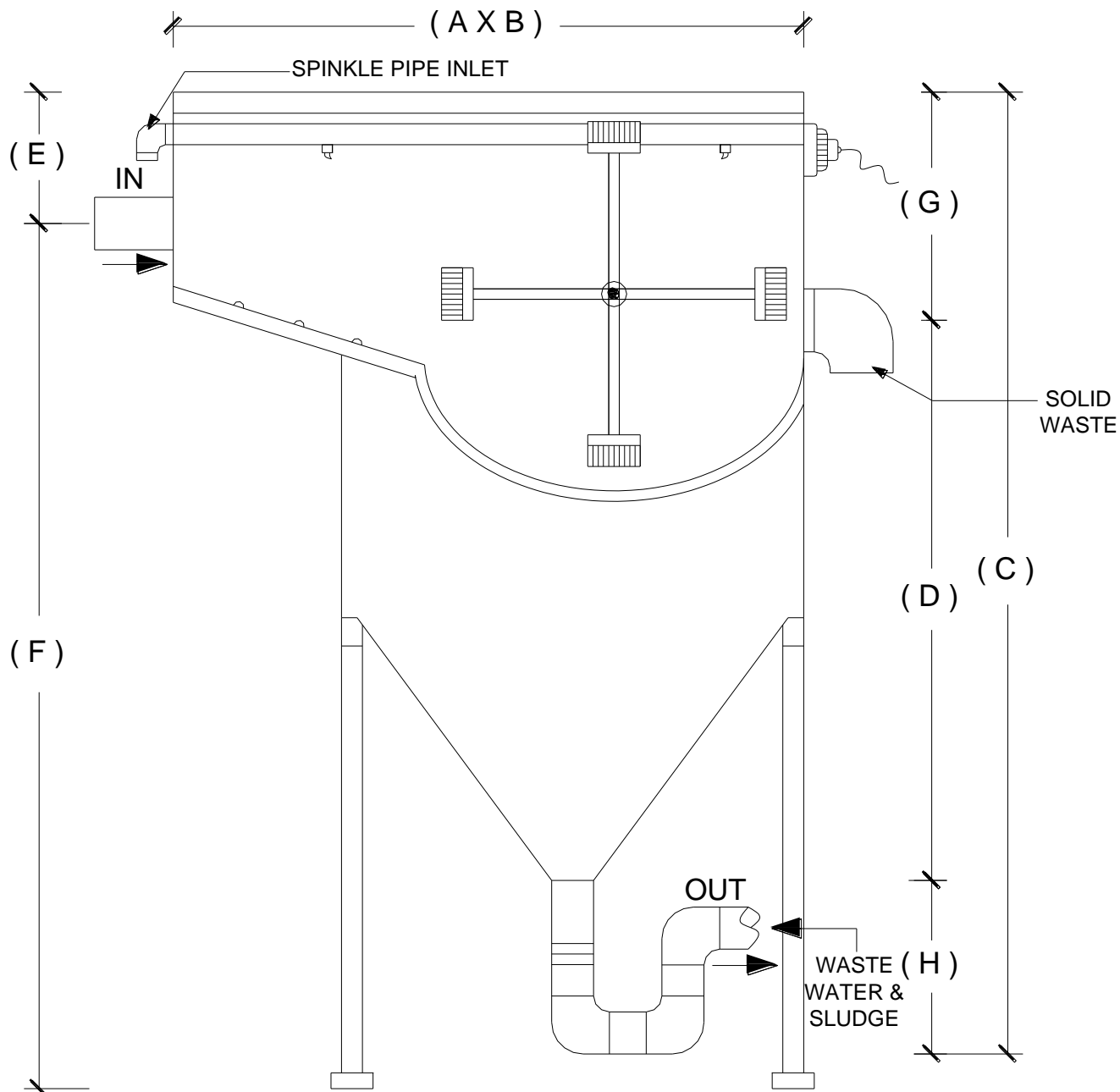
FROSGOLD

MODEL	FCCS 855 XL/SQ
SIZE	A=(2300 mm) B=(1800mm) C=(2000mm) D=(1500mm) E=(250mm) F=(1750mm)
FLOWRATE	550 GPM
PIPE Ø	150 mmØ - 200 mmØ
APPROX WEIGHT FULL	5000 KG (TANK COME WITH WATER ONLY)
MATERIAL	STAINLESS STEEL PREFABRICATED TANK
NOTE : VARIES SIZE AVAILABLE SUBJECT TO THE FLOWRATE AND SITE CONDITION FOR PIPE POSITIONING	

In keeping with our policy of updating products we reserve the right
To make improvements or changes without notice.

FROSGOLD

SLUDGE & SOLID SEPARATOR



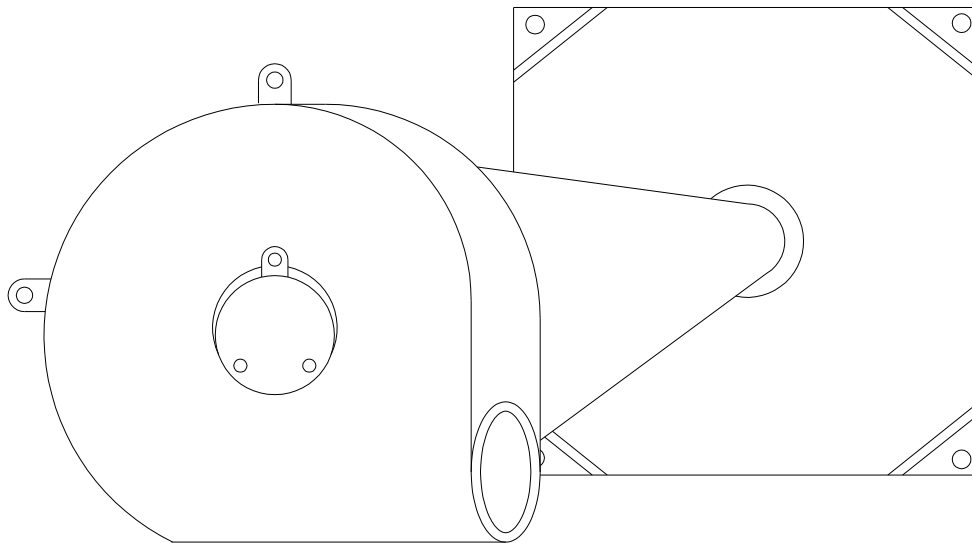
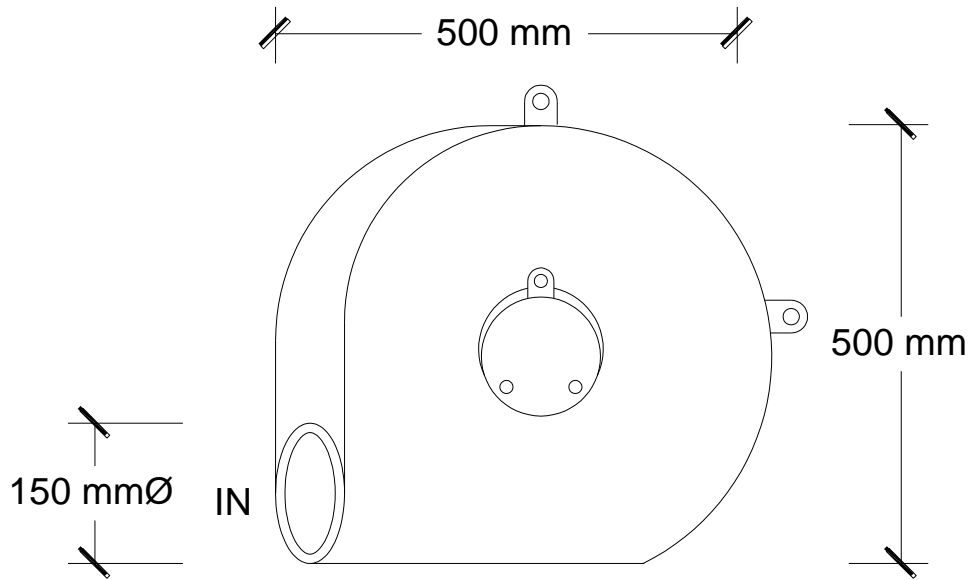
FROSGOLD

MODEL	FSSS 853 XL/HL
SIZE	A=(2000mm) B=(2000mm) C=(2500mm) D=(2200mm) E=(220mm) F=(2280mm) G=(500mm) H=(300mm)
FLOWRATE	550 GPM
PIPE Ø	150 mmØ
APPROX WEIGHT FULL	5550KG (TANK COME WITH WATER ONLY)
MATERIAL	STAINLESS STEEL PREFABRICATED TANK
NOTE : VARIES SIZE AVAILABLE SUBJECT TO THE FLOWRATE AND SITE CONDITION FOR PIPE POSITIONING	

In keeping with our policy of updating products we reserve the right
To make improvements or changes without notice.

FROSGOLD

SYPHONIC STORM DRAIN



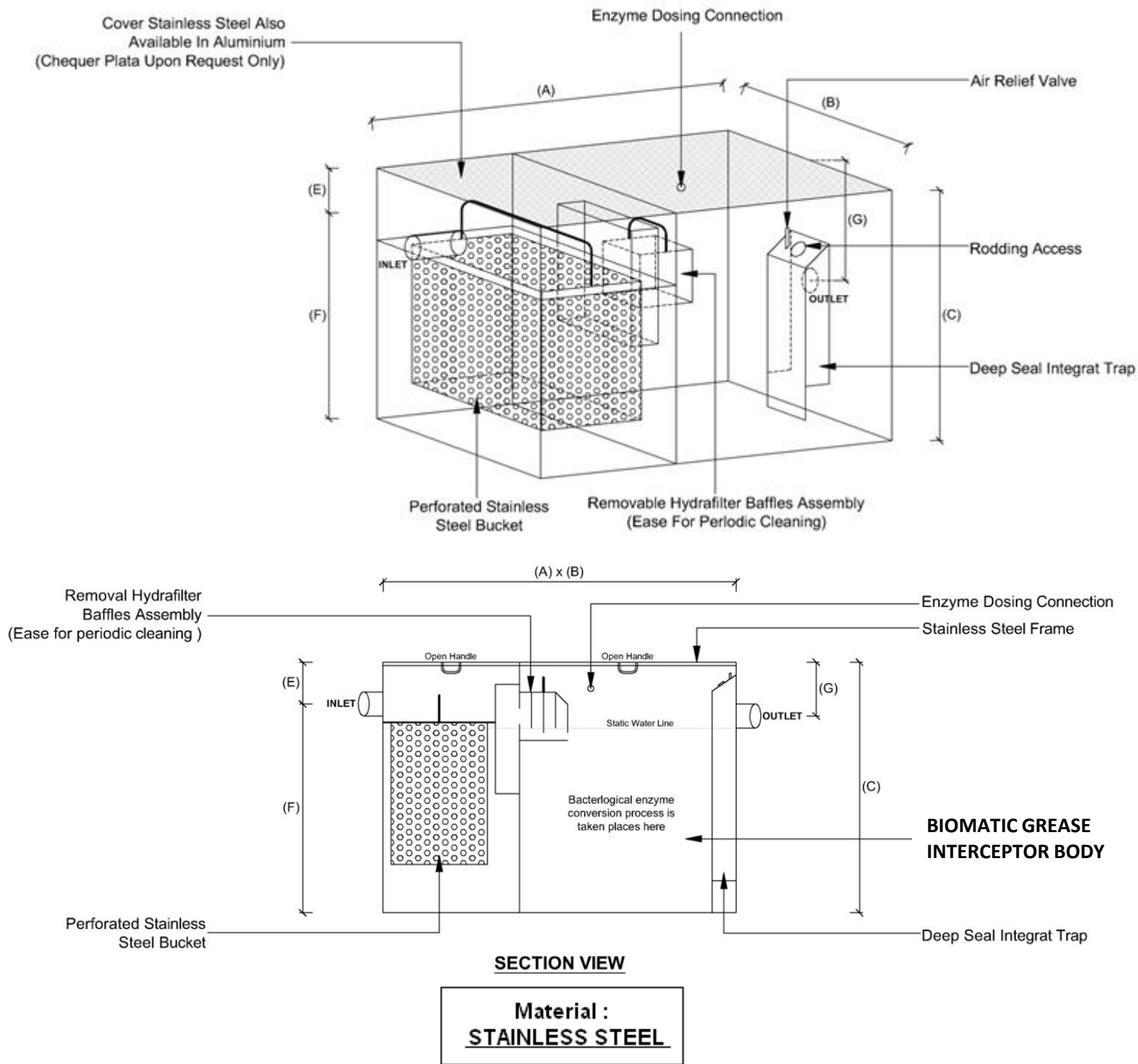
FROSGOLD

FROSGOLD		
MODEL	FSYD 865 SC	SYPHONIC STORM DRAIN
BODY DIMENSION	500 mm \emptyset	
PIPE \emptyset	150 mm \emptyset - 200 mm \emptyset	
NOTE : VARIES SIZE AVAILABLE SUBJECT TO THE FLOWRATE AND SITE CONDITION FOR PIPE POSITIONING		

In keeping with our policy of updating products we reserve the right
To make improvements or changes without notice.

FROSGOLD

BIOMATIC GREASE INTERCEPTOR ('N' SERIES)



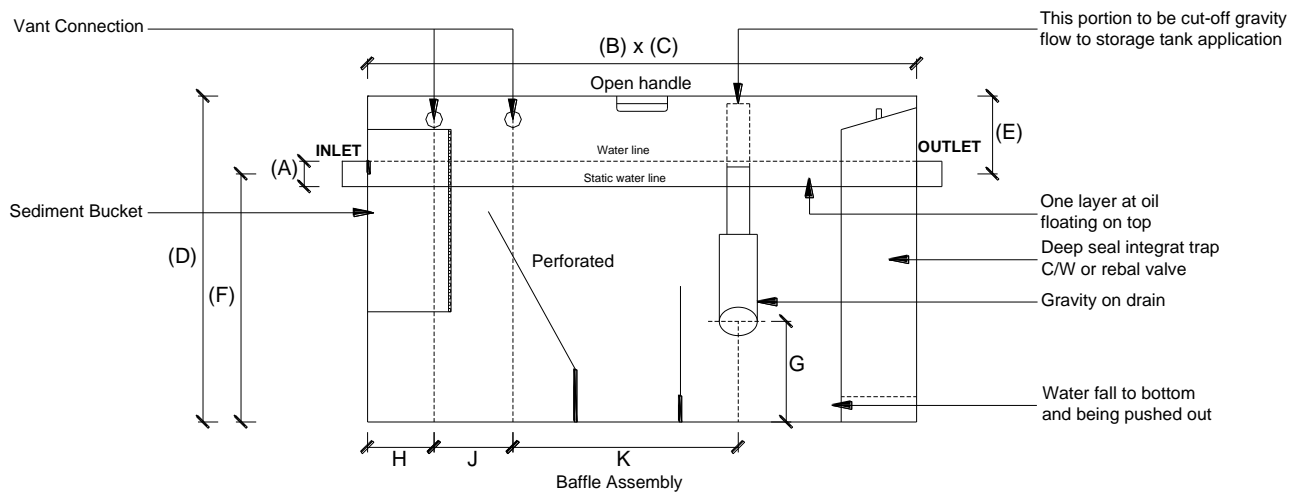
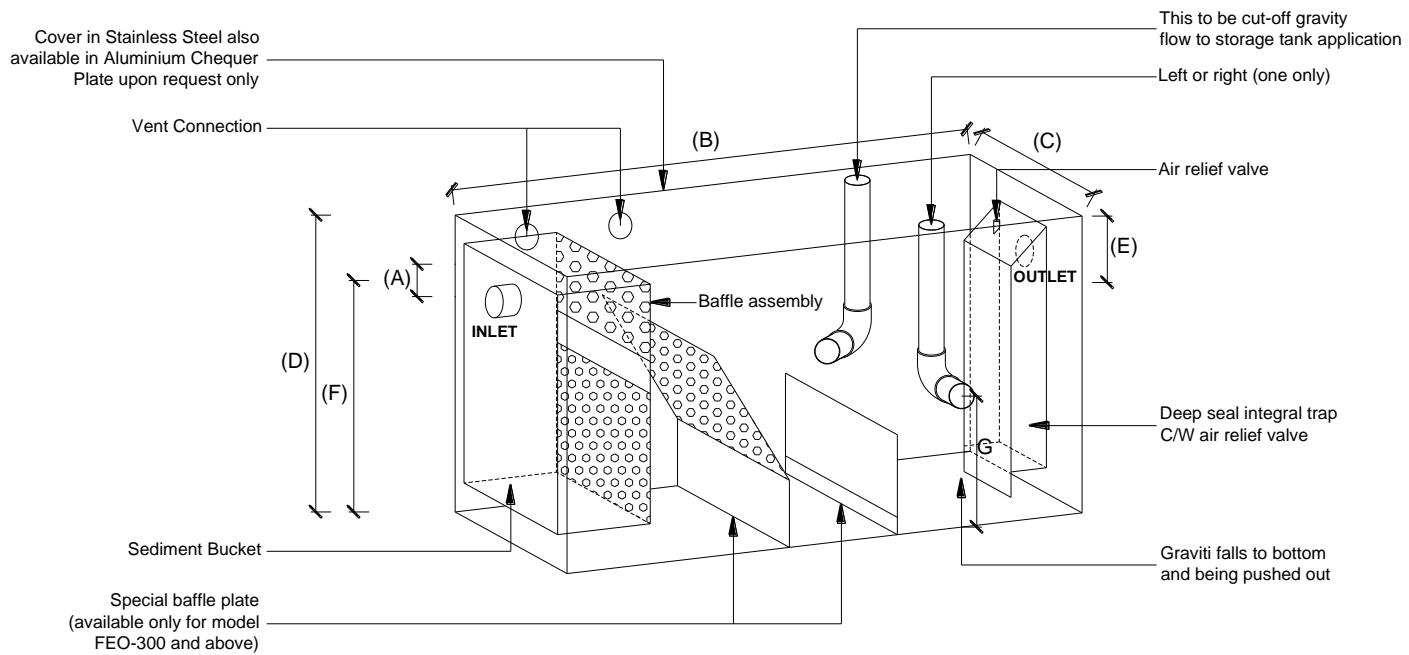
Dimensional Data ('N' Series)

Code no:	Flowrate (GPM)	Flowrate (litre/sec)	Approx. weight (full)(kg)	Grease cap. (kg)	Length A (mm)	Width B (mm)	Height C (mm)	Pipe size (mm)	E (mm)	F (mm)	G (mm)
FE 9012N	12	0.91	75	10	600	280	440	50	150	290	200
FE 9015N	15	1.14	90	14	600	320	470	50	150	320	200
FE 9020N	20	1.50	110	18	620	360	530	75	180	350	230
FE 9025N	25	1.89	130	23	650	410	560	100	200	360	250
FE 9035N	35	2.65	170	32	700	450	600	100	200	400	250
FE 9050N	50	3.78	220	46	800	520	630	100	200	430	250
FE 9075N	75	5.68	350	68	1040	710	610	100	200	410	250
FE 9100N	100	7.57	710	91	1200	860	840	100	210	630	285
FE 9150N	150	11.35	1000	136	1400	910	940	100	210	730	285
FE 9200N	200	15.14	1150	182	1600	1010	1060	150	260	800	335
FE 9250N	250	18.92	1800	227	1700	1110	1160	150	260	900	335
FE 9300N	300	22.70	2000	273	1800	1160	1160	150	260	900	335
FE 9350N	350	26.49	2300	318	2000	1210	1210	150	260	950	335
FE 9400N	400	30.28	2700	363	2100	1310	1260	150	260	1000	335
FE 9450N	450	34.05	3300	409	2200	1410	1360	150	260	1100	335
FE 9500N	500	37.84	4200	454	2200	1410	1560	150	260	1300	335

In keeping with our policy of updating products we reserve the right To make improvements or changes without notice.

FROSGOLD

OIL INTERCEPTOR



SECTION VIEW

Material :
STAINLESS STEEL

Dimensional Data :

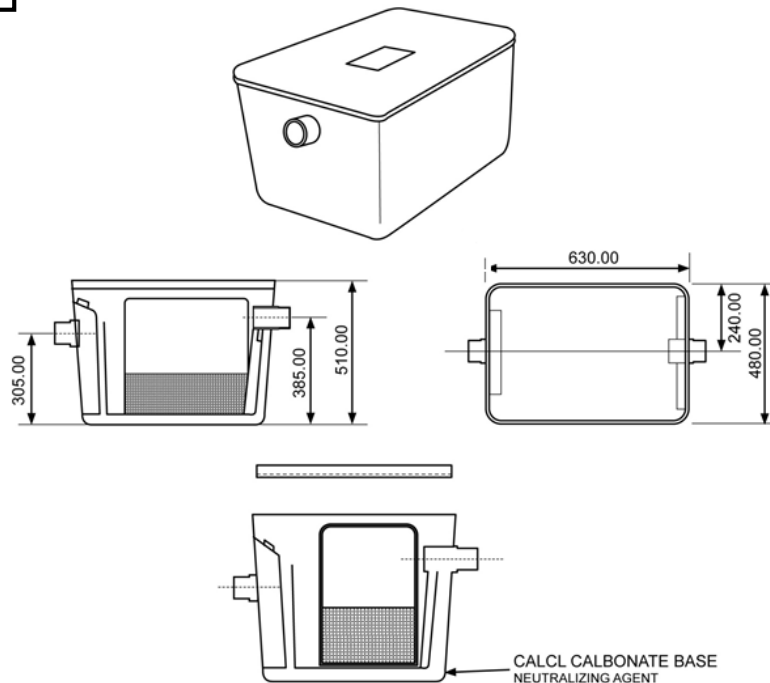
Oil Interceptor Code	Flowrate (GPM)	Flowrate (litre /sec)	A Pipe Size (mm)	B Length (mm)	C Width (mm)	D Height (mm)	E (mm)	F (mm)	G (mm)	H (mm)	J (mm)	K (mm)
FEO-007	7	0.53	50	407	382	306	89	217	82	102	77	128
FEO-010	10	0.76	50	509	407	306	89	217	89	102	102	204
FEO-015	15	1.14	50	509	407	458	101	357	96	102	102	204
FEO-020	20	1.50	75	763	407	458	101	357	102	128	179	306
FEO-025	25	1.89	75	763	407	509	102	407	107	128	179	306
FEO-035	35	2.65	100	864	560	534	127	407	127	154	204	306
FEO-050	50	3.78	100	864	560	611	153	458	126	154	204	306
FEO-075	75	5.68	100	1017	814	712	152	560	140	179	255	306
FEO-100	100	7.57	100	1372	916	814	203	611	127	179	331	331
FEO-150	150	11.35	100	1526	966	961	223	738	133	179	382	382
FEO-200	200	15.14	100	1754	1093	1042	254	788	140	179	483	458
FEO-250	250	18.92	100	1880	1144	1221	281	940	140	179	483	509
FEO-300	300	22.70	150	1932	1221	1296	330	966	140	179	509	509
FEO-350	350	26.49	150	2008	1271	1347	355	992	140	179	534	534
FEO-400	400	30.28	150	2109	1398	1499	431	1068	153	179	585	585
FEO-500	500	37.84	150	2312	1526	1780	433	1347	203	179	636	636
FEO-600	600	45.41	200	2541	1830	2008	482	1526	203	179	687	687

In keeping with our policy of updating products we reserve the right To make improvements or changes without notice.

FROSGOLD

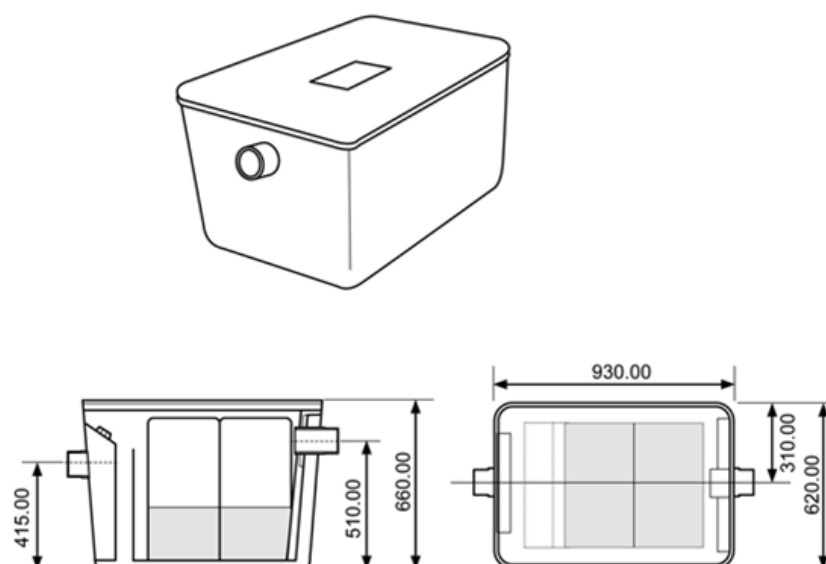
NEUTRALIZING TANK

MODEL : FN 100



The FN 100 is a medium capacity Neutralizing Tank of 100 litres capacity. Suitable for centralized installation for neutralizing and dilution of laboratory acids and chemicals. It is fabricated in stainless steel materials offering high chemical and impact resistant. It has horizontal inlet and outlet of 76 mm diameters. The cover is a screw down stainless steel plate. Periodic maintenance is recommended and the neutralizing agent topped up if necessary.

MODEL : FN 250

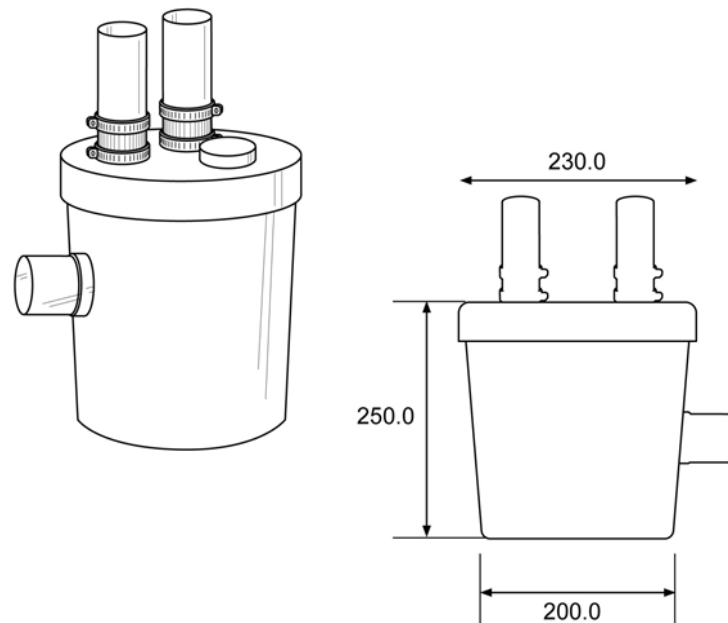


The FN 250 is a large capacity Neutralizing Tank of 250 litres capacity. Suitable for centralized installation for neutralizing and dilution of laboratory acids and chemicals. It is fabricated in stainless steel materials offering high chemical and impact resistant. It has horizontal inlet and outlet of 102mm diameters. The cover is a screw down stainless steel plate. Periodic maintenance is recommended and the neutralizing agent topped up as required.

In keeping with our policy of updating products we reserve the right
To make improvements or changes without notice.

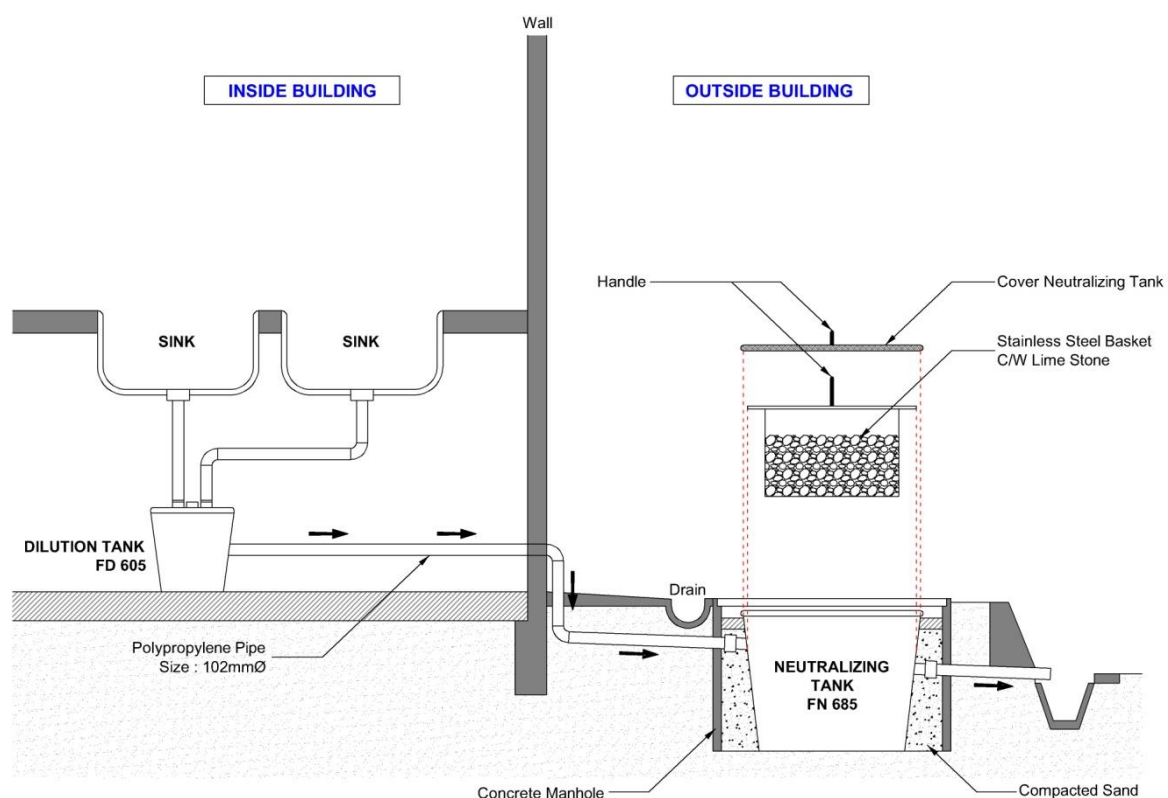
FROSGOLD

DILUTION RECOVERY TRAP MODEL : FD 05



The FD 05 Dilution Recovery Trap is fabricated in stainless steel materials to give it high chemicals and heat resistance properties. It is ideal for underbench installations serving one multiple sinks. It has a 140mm seal, 2 nos. 38mm inlet connector and a 51mm outlet. A 38mm outlet option is available if required.

Installation of FN 250 / FN 100 / FD 05

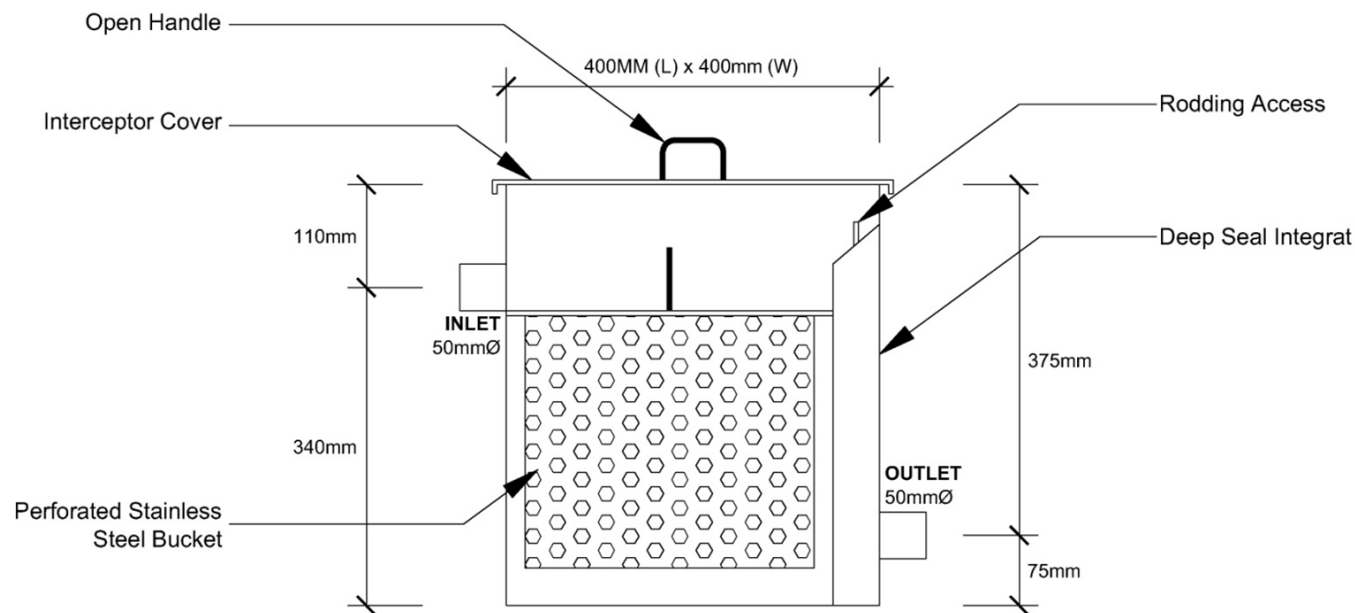


In keeping with our policy of updating products we reserve the right
To make improvements or changes without notice.

FROSGOLD

SEDIMENT INTERCEPTOR

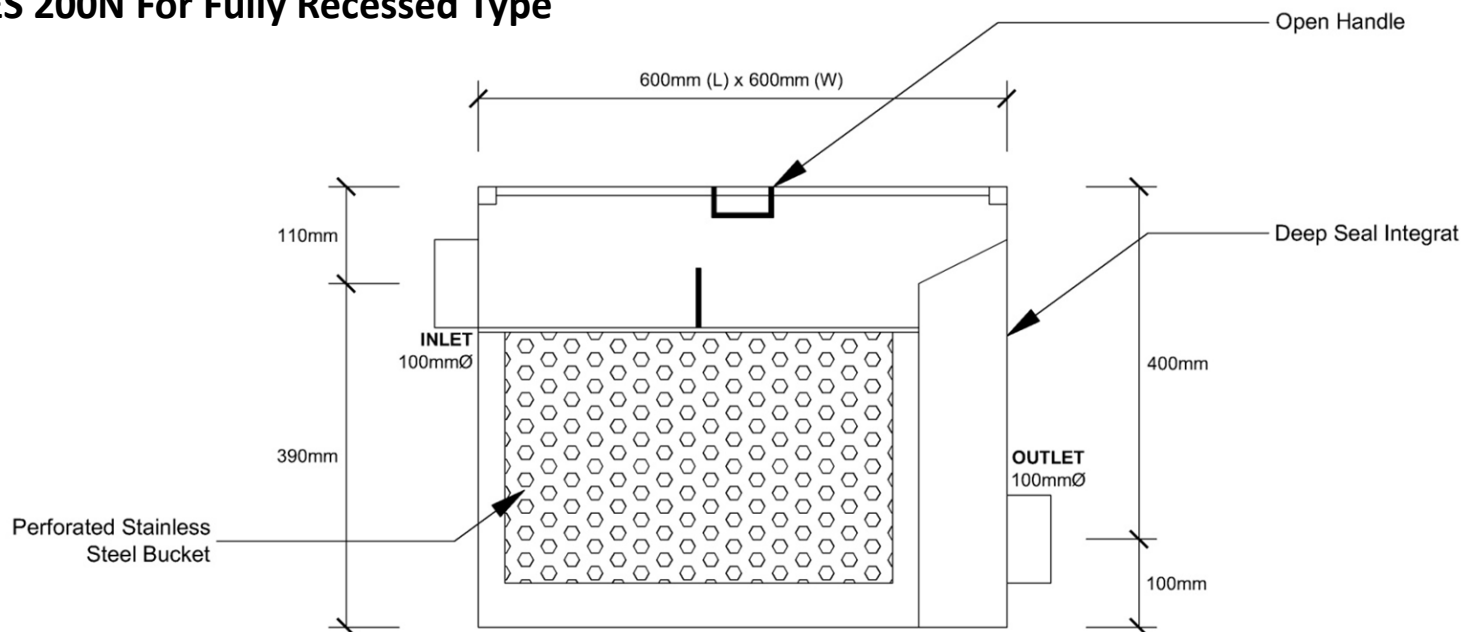
FES 168 For Standing Installation Only



Size : 400mm (L) x 400mm (W) x 450mm (H)
Pipe Size : 50mmØ Inlet / Outlet

FES 168 Sediment Interceptor is designed to act as an effective strainer and intercept foreign solid matter from entering drain lines. The provision of a perforated stainless steel sediment bucket makes the maintenance work much easier. The installation of 168 Sediment Interceptor therefore protects the waste lines against clogging.

FES 200N For Fully Recessed Type



Size : 600mm (L) x 600mm (W) x 500mm (H)
Pipe Size : 100mmØ Inlet / Outlet

One sediment interceptor FES 168 is installed for each hawker stall, while a centralized automatic biomatic grease interceptor is installed for each row of stalls.

The grease interceptor should be installed within the length of 10 meter from the washing sinks to avoid the built-up of grease along the pipe before the interceptor. However if the piping length exceed 10 meters and the grease interceptor to be installed far away from the washing sinks then the sediment trap is required below each sinks to collect the solid waste. In this case dosing of extra enzyme into the pipe line may require.

In keeping with our policy of updating products we reserve the right
 To make improvements or changes without notice.

FROSGOLD

OIL SKIMMER SYSTEM (FOR THE SERVICE AND MAINTENANCE USE)



BELT SKIMMER



FLOATING SKIMMER

Model Number	Reach	Lift Rate	World-wide	Worldwide		With CE Mark
			115/1/60	115/1/60	220/1/50	220/1/50
FDDBS-10-270P1-FTPS	8"	1qt./hr	37800	31680	31685	31695
FDDBS-10-360P1-FTPS	12"	1gal./hr	37805	31681	31686	31698
FDDBS-30-270P1-FTPS	8"	7qts./hr	37810	31882	n/a	n/a
FDDBS-30-360P1-FTPS	12"	7qts./hr	37820	31883	n/a	n/a

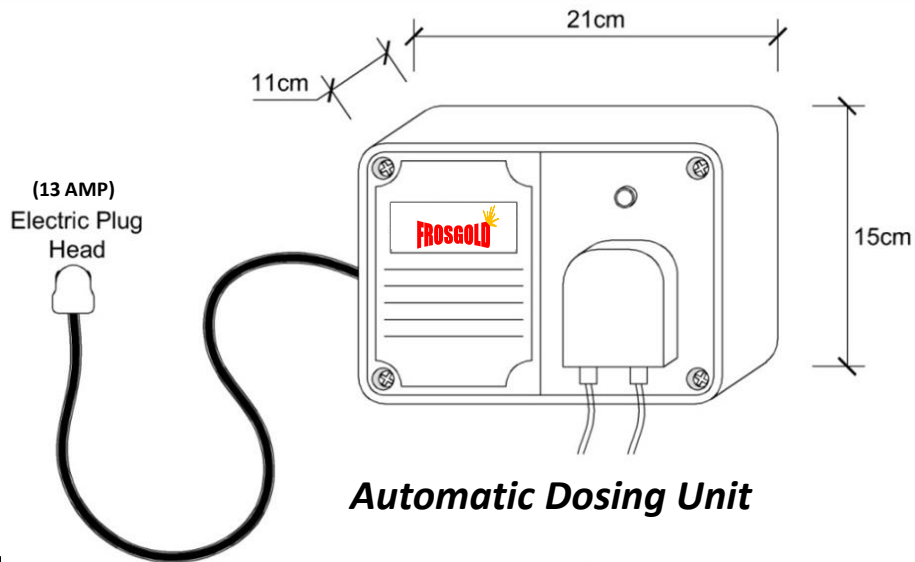
Note : Belt lengths can be easily made for reaching from 2" to 50ft!

In keeping with our policy of updating products we reserve the right
To make improvements or changes without notice.

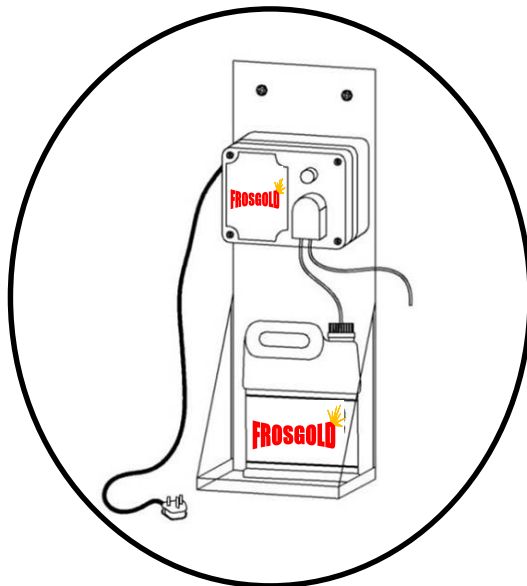
FROSGOLD

AUTOMATIC DOSING UNIT (ADU) FV 5000

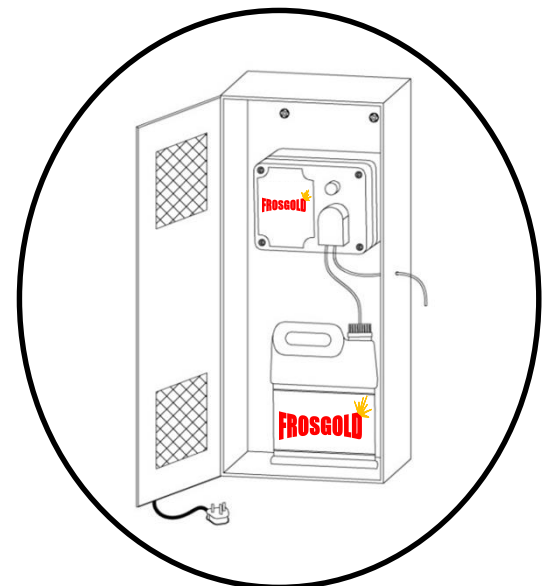
TOGETHER WITH PANEL, LOCKABLE CAGE AND LIQUID ENZYME



Liquid Enzyme



Hanging Panel



Lockable Cage

Dosage rates for Frosgozyme biomatic liquid enzyme :

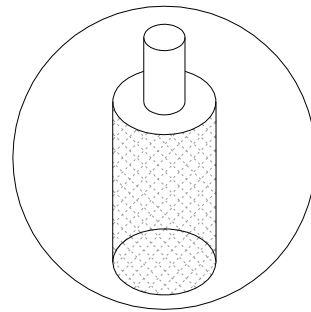
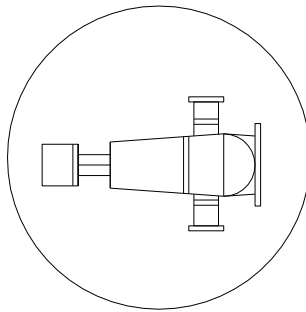
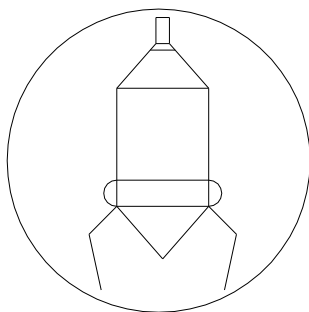
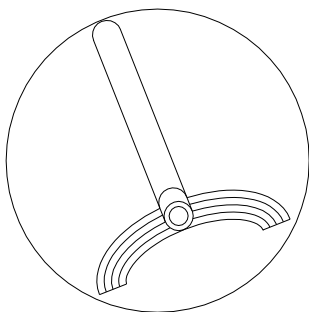
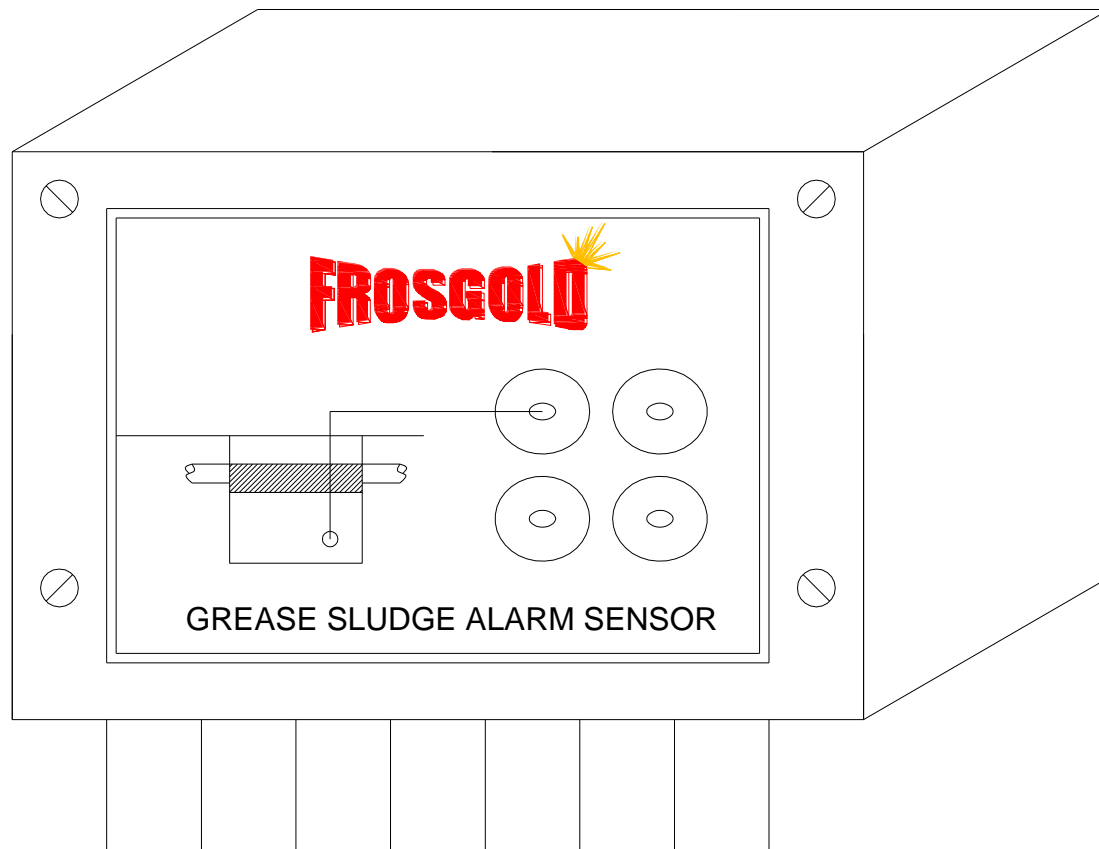
Code Number	Daily Meal Covers (approx.)	Grease cap. In kilo	Flow rate (GPM)	Starter dose (ml)	Daily Dose (ml)	Monthly Dose (l)
FE 9015	up to 150	14	15	250	27.50	0.825
FE 9020	150 - 250	18	20	250	27.50	0.825
FE 9025	250 - 300	23	25	250	27.50	0.825
FE 9035	300 - 400	32	35	375	40	1.20
FE 9050	400 - 600	46	50	500	53.75	1.613
FE 9075	600 - 1000	68	75	625	71.25	2.14
FE 9100	1000 - 2250	91	100	875	90	2.7
FE 9150	2250 - 3250	136	150	1250	90	2.7
FE 9200	3250 - 4500	182	200	1750	135	4.05
FE 9250	4500 - 6000	227	250	2125	178.75	5.37
FE 9300	6000 - 6700	273	300	2500	223.75	6.71
FE 9350	6700 - 7875	318	350	2875	268.75	8.06
FE 9400	7875 - 9500	363	400	3375	321.25	9.64
FE 9450	9500 - 12000	409	450	3750	357.50	10.73
FE 9500	12000 - 15000	454	500	4125	392.50	11.78

In keeping with our policy of updating products we reserve the right To make improvements or changes without notice.

OIL , GREASE , SLUDGE ALARM SENSOR SYSTEM UNIT

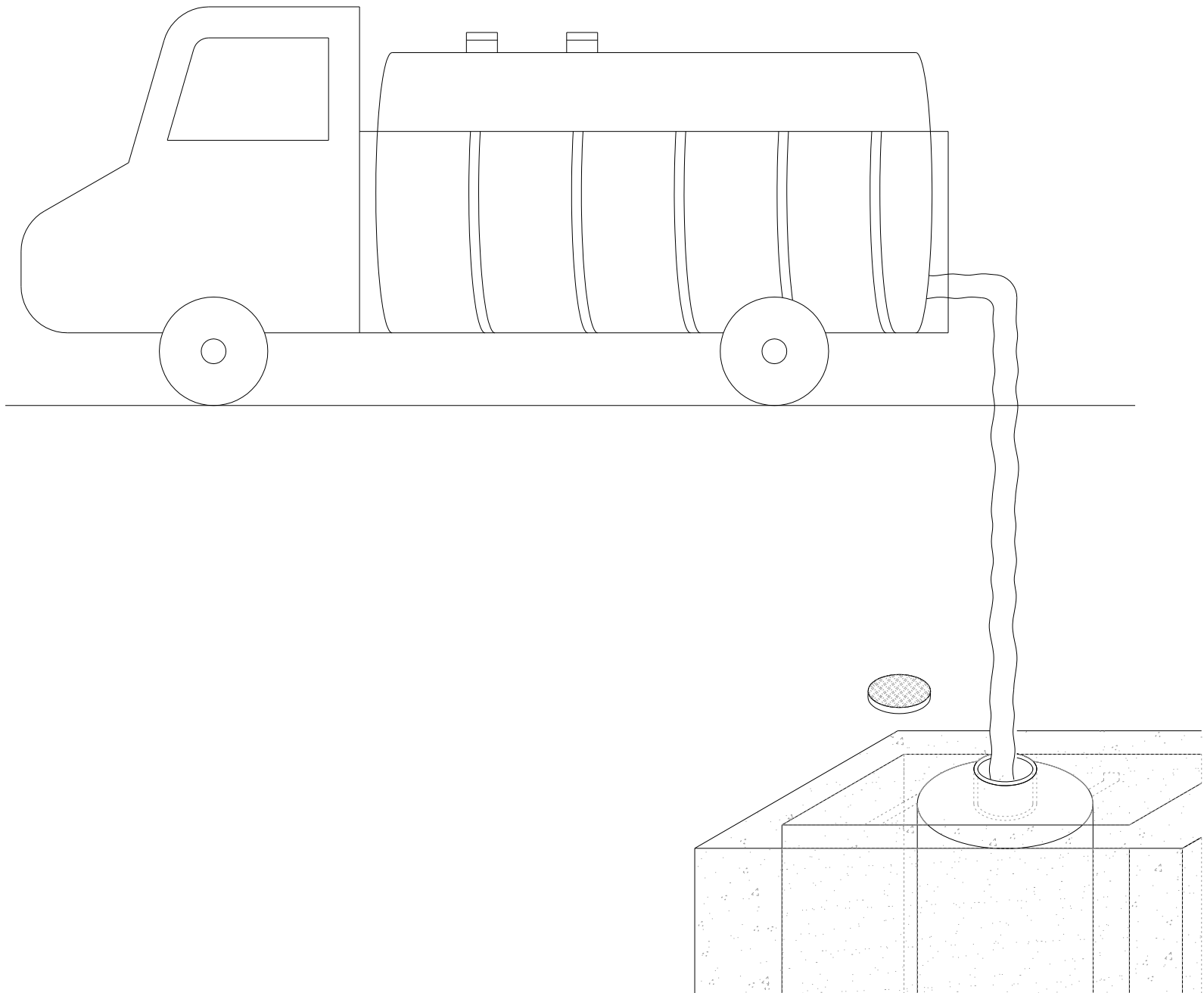
MODEL AVAILABLE

- 1) SET ALARM SENSOR
- 2) VIBRATION ALARM SENSOR
- 3) RADAR ALARM SENSOR





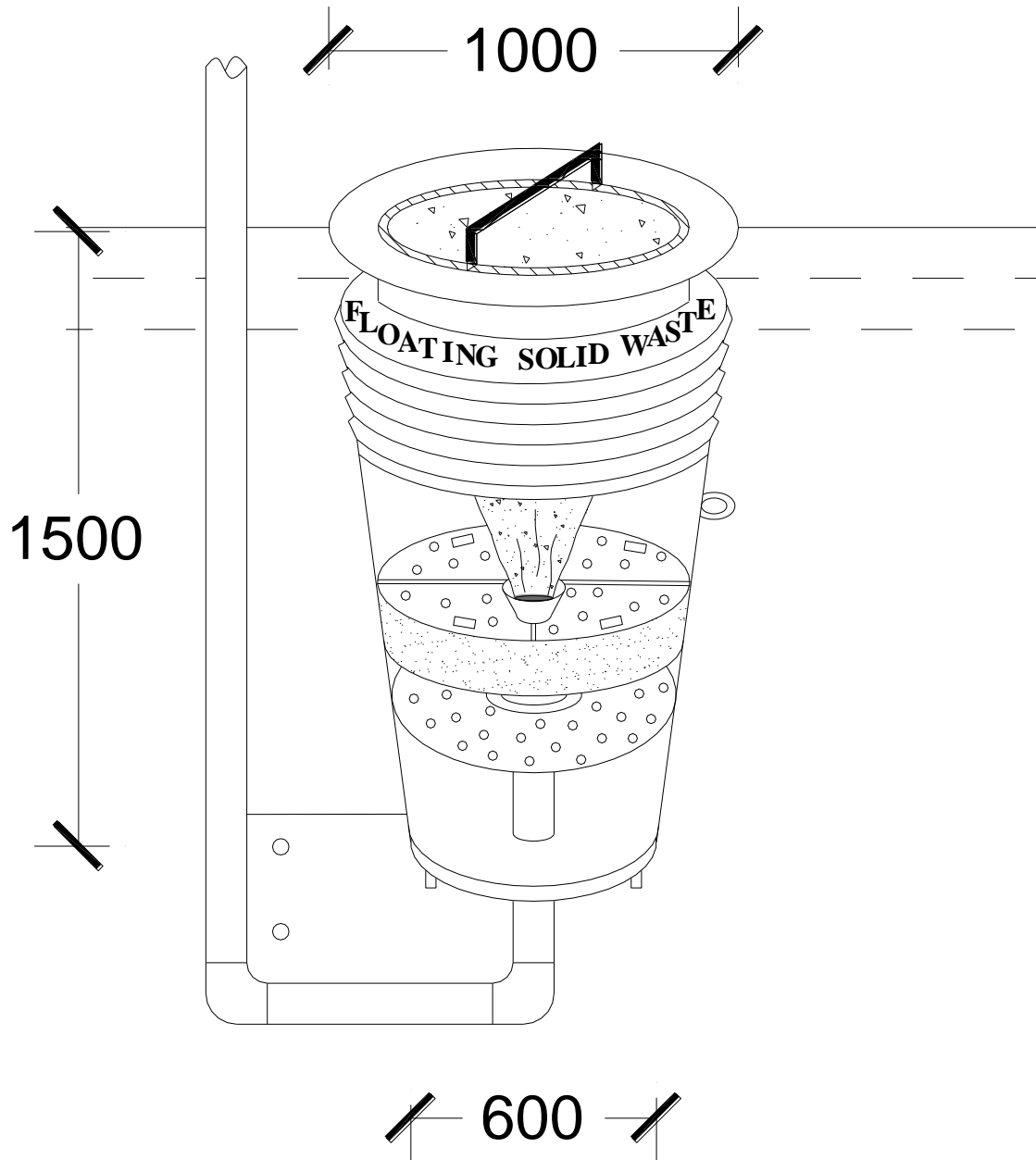
STORMCEPTOR SERVICE AND MAINTENANCE SUCTION TRUCK



In keeping with our policy of updating products we reserve the right
To make improvements or changes without notice.

FROSGOLD

FLOATING SOLID WASTE TRAP

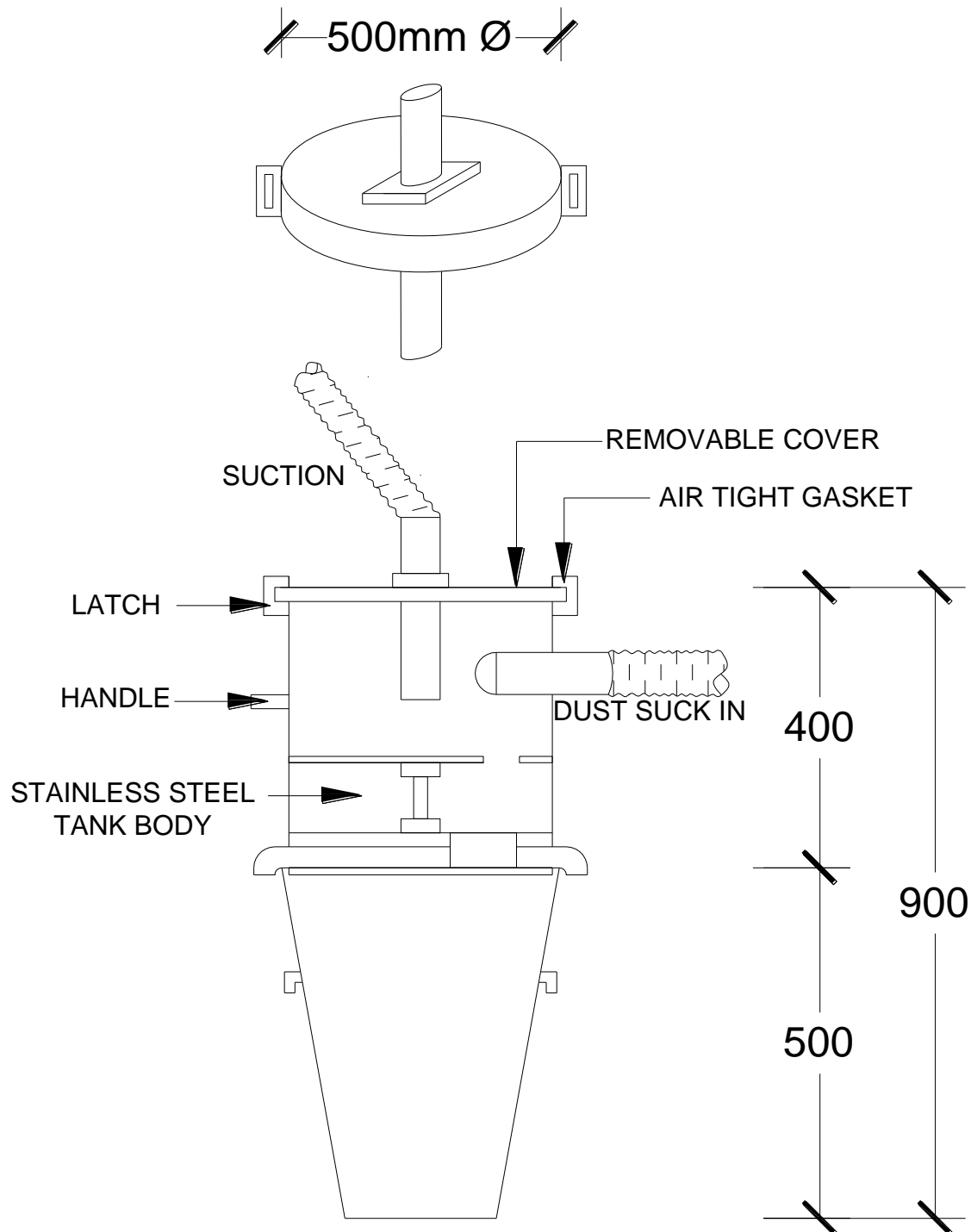


FROSGOLD	
MODEL	FSSS 853 XL/HL
SIZE	MEDIUM [1000 MM DIAMETER X 600 MM DIAMETER (BOTTOM) X EXTEND 1500 MM (H)]
MATERIAL	STAINLESS STEEL C/W PLASTIC INLET MOUTH AND NETTING
NOTE : VARIES SIZE AVAILABLE SUBJECT TO THE FLOWRATE AND SITE CONDITION FOR PIPE POSITIONING	

In keeping with our policy of updating products we reserve the right
To make improvements or changes without notice.

FROSGOLD

DUST INTERCEPTOR



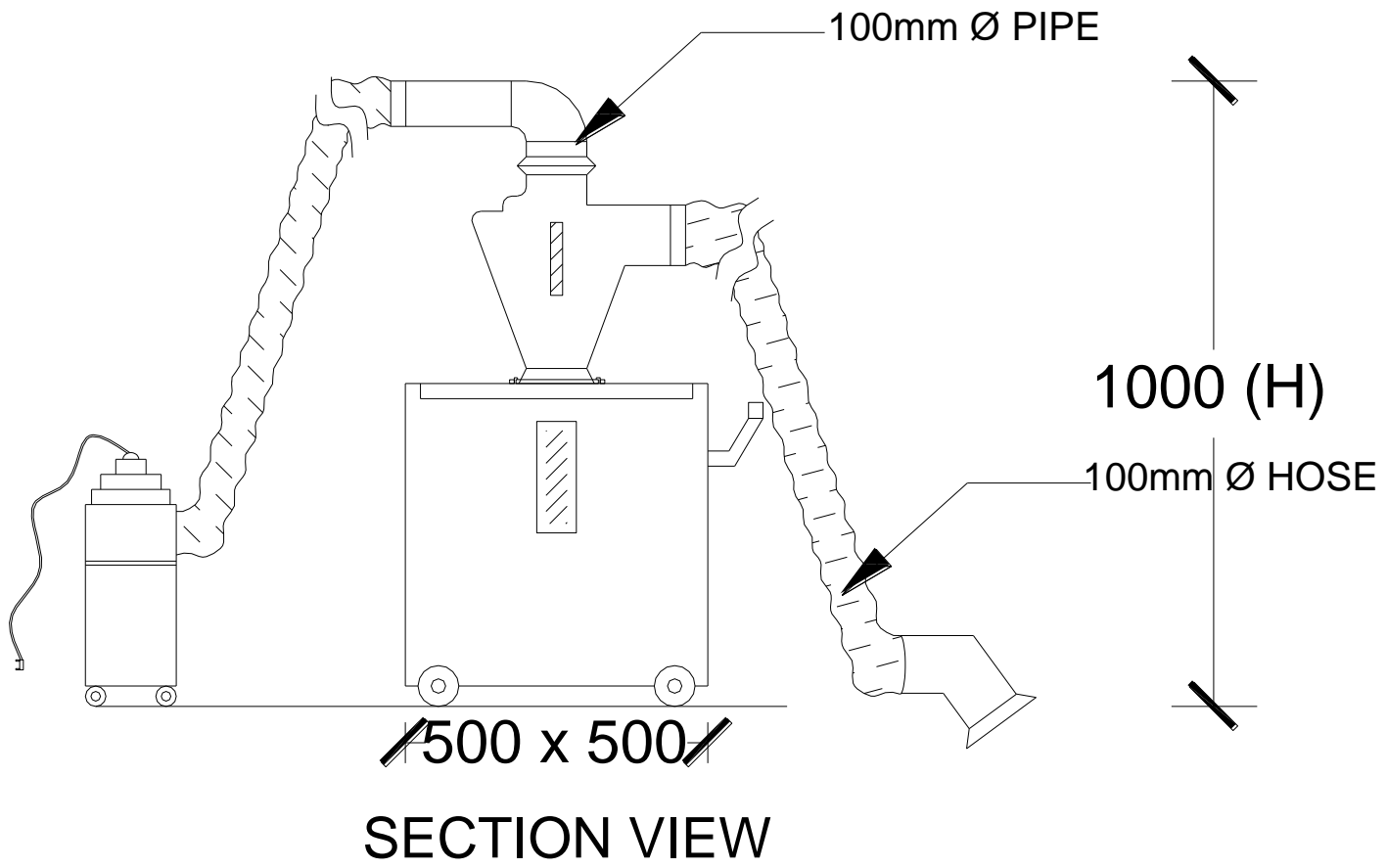
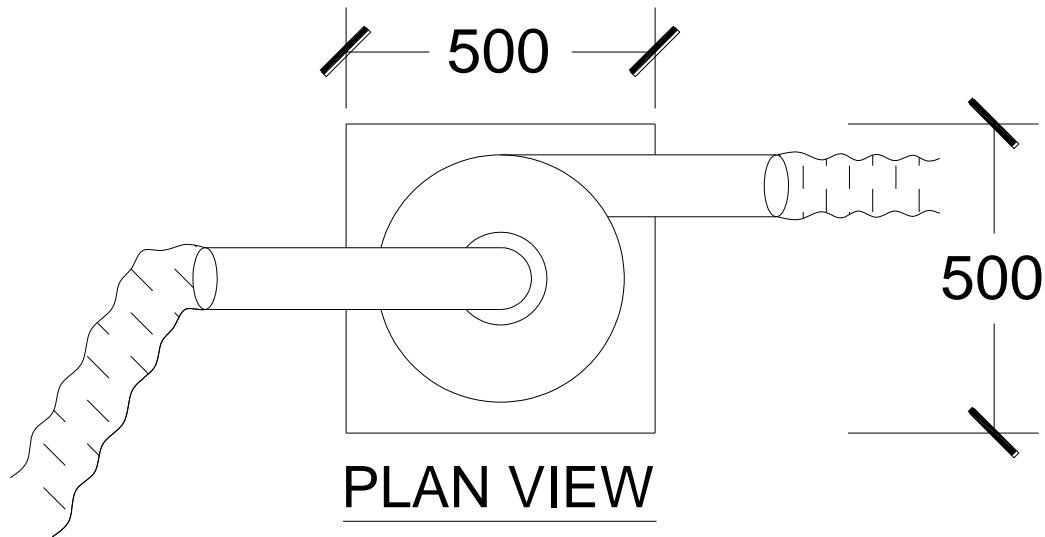
FROSGOLD

MODEL	FDI – 799S
SIZE	500 MM Ø X 900 MM (H)
AVAILABLE	ANY CUSTOM MADE SIZE (DUST VACUUM CYCLONE TYPE)
NOTE : VARIES SIZE AVAILABLE SUBJECT TO THE SITE CONDITION	

In keeping with our policy of updating products we reserve the right
To make improvements or changes without notice.

FROSGOLD

DUST INTERCEPTOR (COLLECTOR)



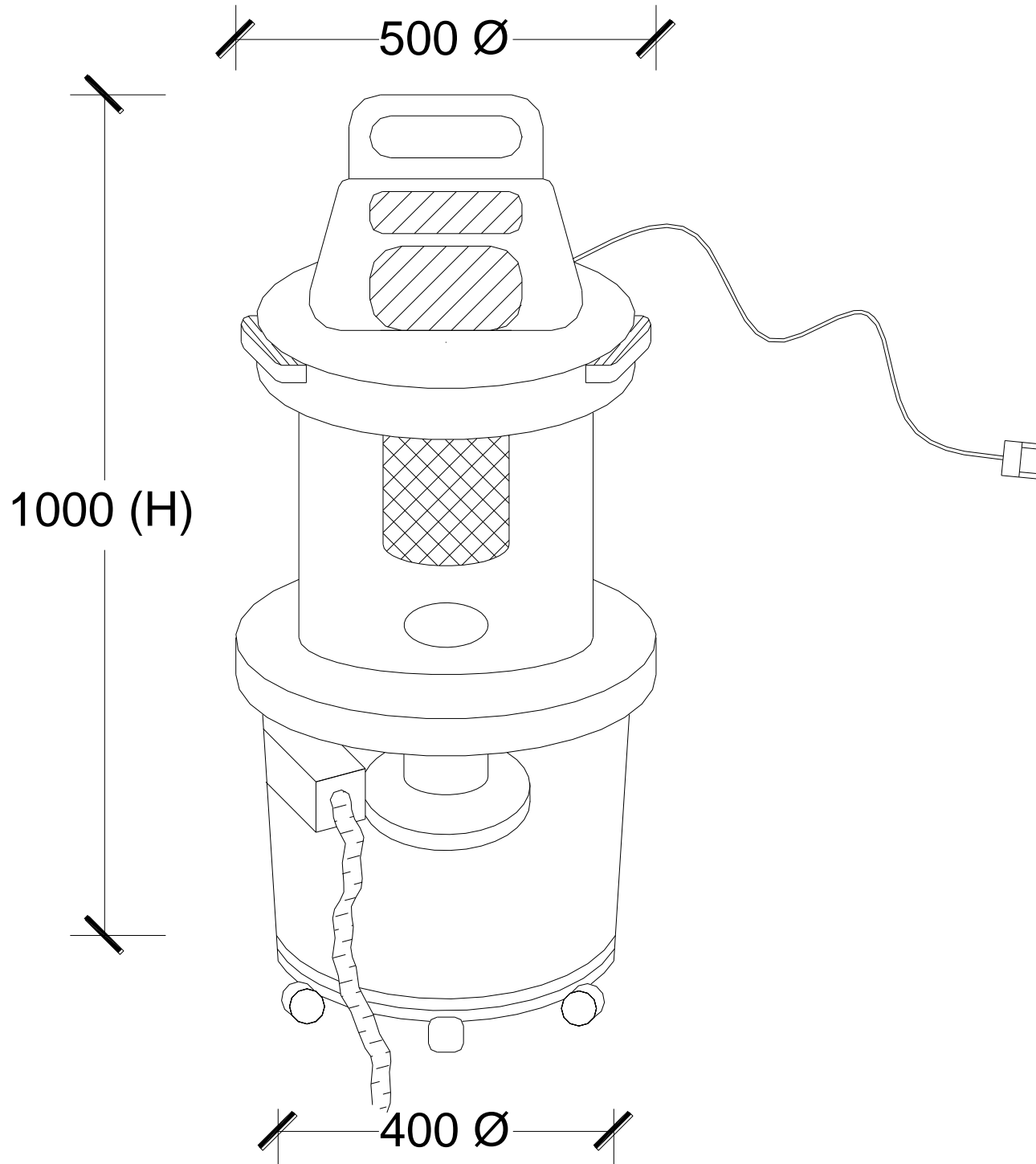
FROSGOLD

MODEL	FDI – 7100 M
SIZE	500 MM X 500 MM X 1000 MM (H)
PIPE / HOSE	100 MM Ø
NOTE : VARIES SIZE AVAILABLE SUBJECT TO THE SITE CONDITION	

In keeping with our policy of updating products we reserve the right
To make improvements or changes without notice.

FROSGOLD

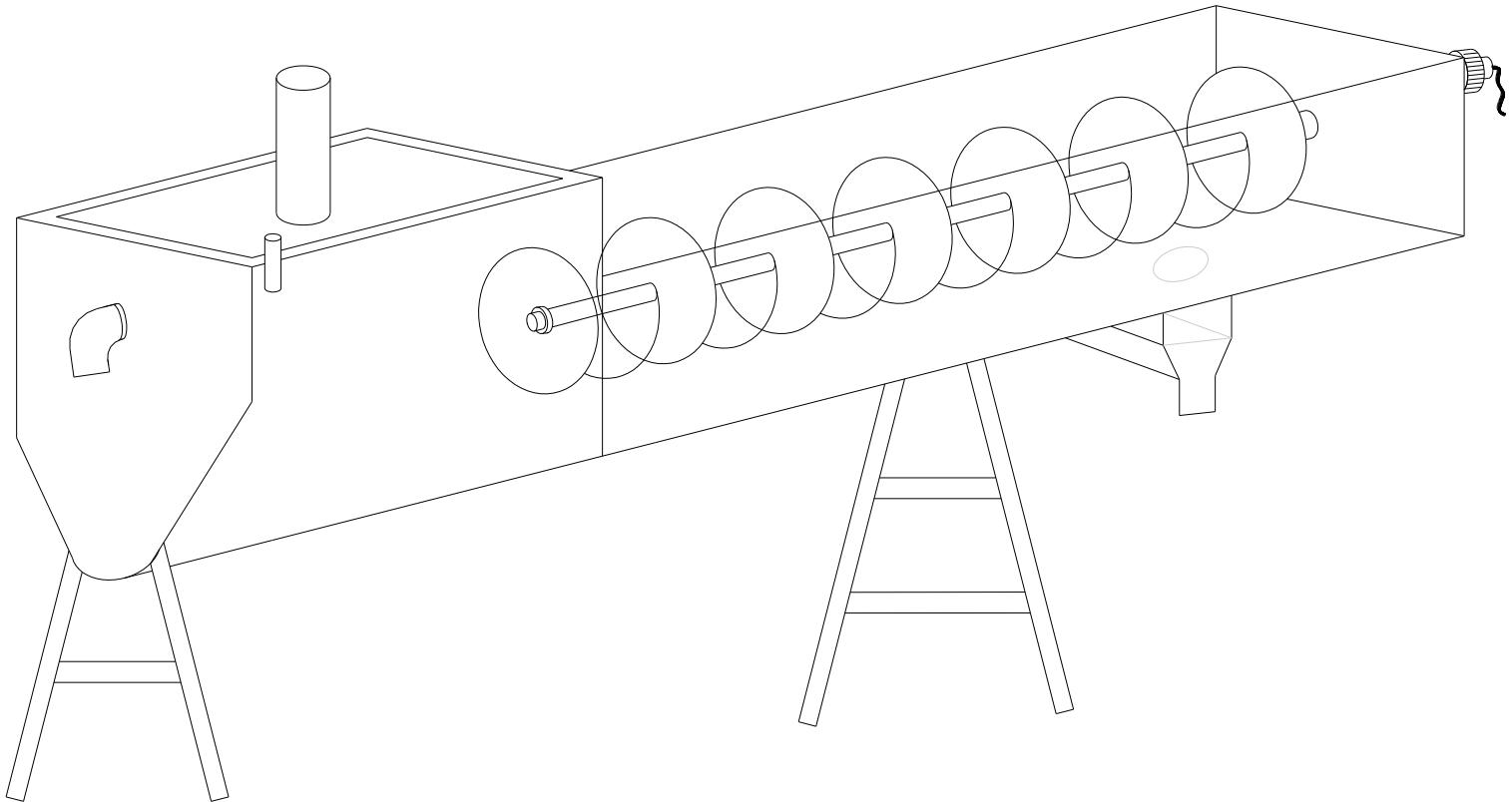
DUST COLLECTOR UNIT SYSTEM



FROSGOLD	
MODEL	FDCU - 7101
SIZE	500 MM Ø X 400 MM Ø X 1000 MM (H)
MATERIAL	STAINLESS STEEL C/W VACUUM MOTOR
NOTE : VARIES SIZE AVAILABLE SUBJECT TO SITE CONDITION	

In keeping with our policy of updating products we reserve the right
To make improvements or changes without notice.

SCREW CONVEYOR (SLUDGE WASTE)



NOTE : (AVAILABLE IN VARIES SIZES AND HEIGHT SUBJECT TO ACTUAL SITE CONDITION)

FROSGOLD

STORM WATER POLLUTANT PROBLEMS (SOLID / LINT / GRIT / SILT / OIL ETC)



SLUDGE



WOOL (LINT)



HAIR



SOLID

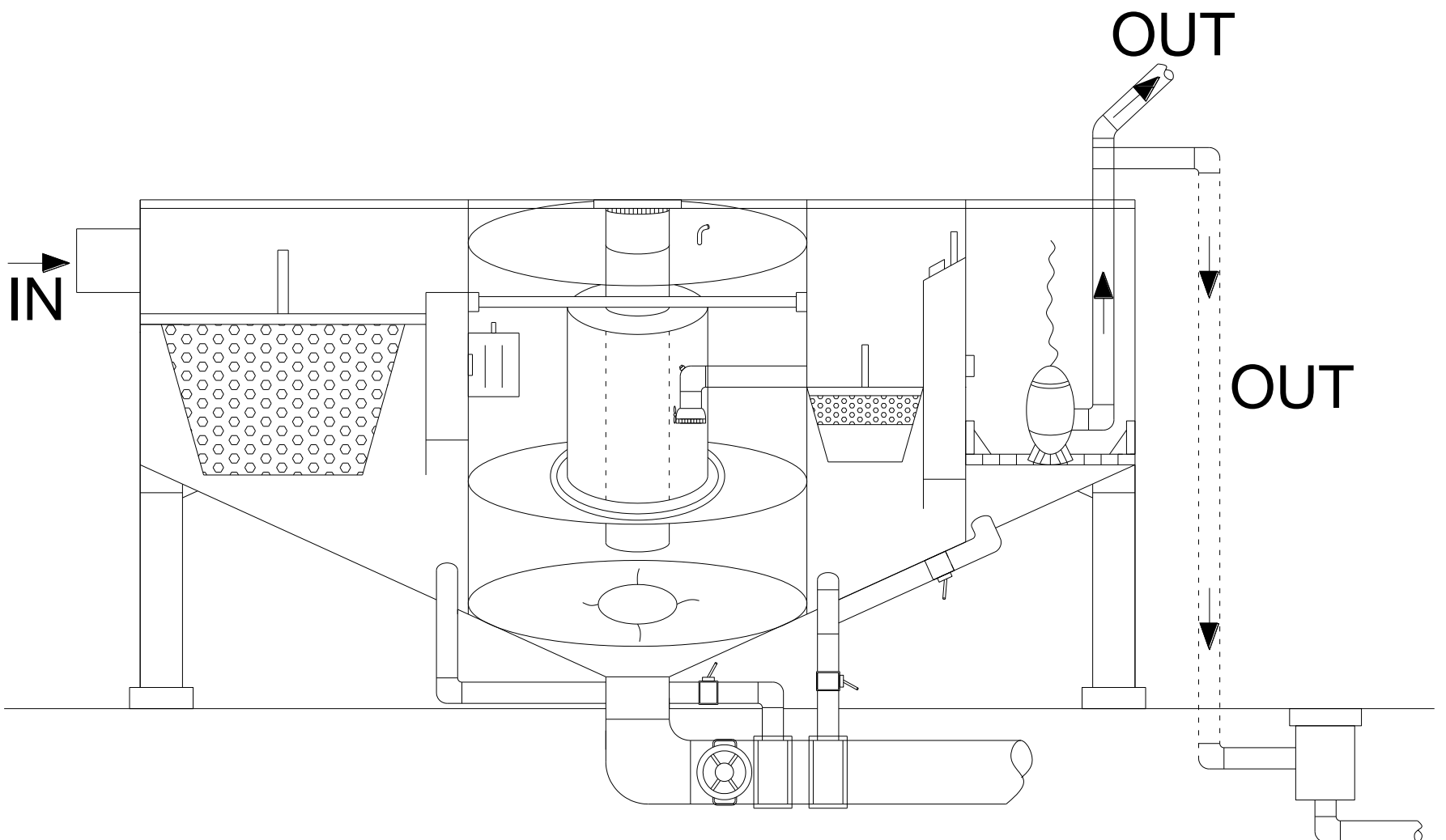


OIL

In keeping with our policy of updating products we reserve the right
To make improvements or changes without notice.

FROSGOLD

MODEL : FLOOR MOUNTED ADVANCE GREASE AND SLUDGE REMOVAL BIOMATIC GREASE INTERCEPTOR SYSTEM



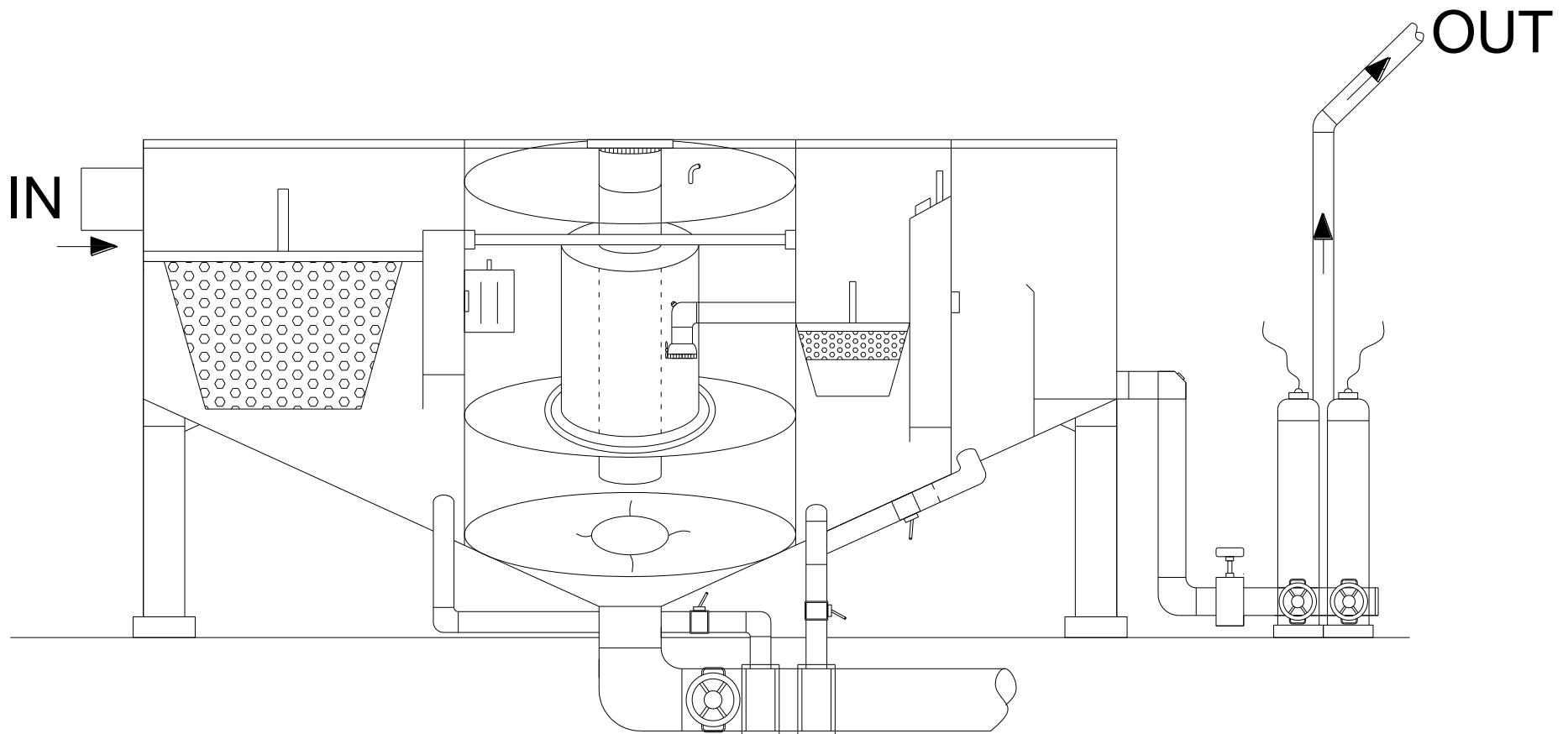
FROSGOLD


MODEL	FE9300 XL-FM – (SP) FOR SUBMERSIBLE PUMP (OUT)
SIZE	2350 MM (L) X 1200 MM (W) X 1200 MM (H)
FLOWRATE	2.5 L/SEC
GPM	300
APPROX WEIGHT FULL	2500 (TANK COME WITH WATER ONLY)
MATERIAL	STAINLESS STEEL PREFABRICATED TANK
NOTE : [VARIES SIZE AVAILABLE SUBJECT TO THE FLOWRATE AND SITE CONDITION]	

In keeping with our policy of updating products we reserve the right
To make improvements or changes without notice.

FROSGOLD

MODEL : FLOOR MOUNTED ADVANCE GREASE AND SLUDGE REMOVAL BIOMATIC GREASE INTERCEPTOR SYSTEM



	
MODEL	FE9300 XL-FMS – (EP) FOR EJECTOR PUMP (OUT)
SIZE	2350 MM (L) X 1200 MM (W) X 1200 MM (H)
FLOWRATE	2.5 L/SEC
GPM	300
APPROX WEIGHT FULL	2500 (TANK COME WITH WATER ONLY)
MATERIAL	STAINLESS STEEL PREFABRICATED TANK
NOTE : [VARIES SIZE AVAILABLE SUBJECT TO THE FLOWRATE AND SITE CONDITION]	

In keeping with our policy of updating products we reserve the right
To make improvements or changes without notice.



**SOYA BEAN WASTE WATER INTERCEPTOR SYSTEM
(FULL SYSTEM MODEL A + B)**

(A)

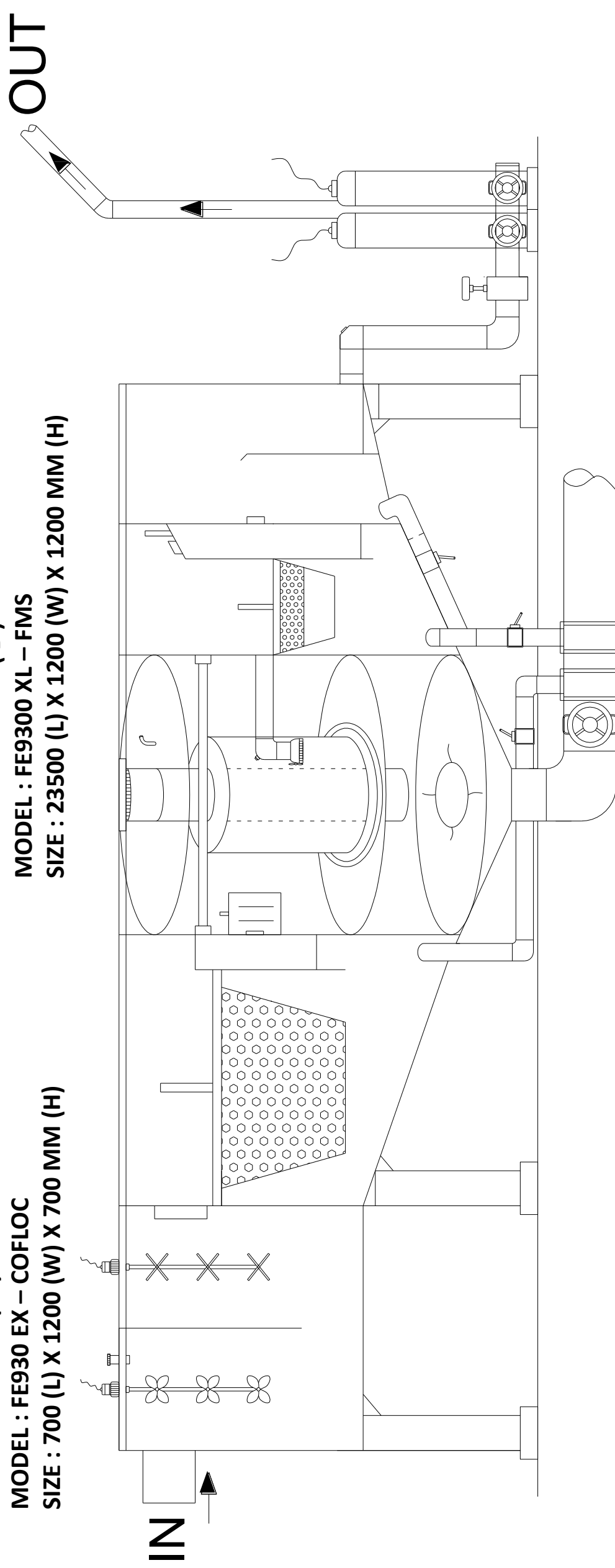
MODEL : FE930 EX – COFLOC

SIZE : 700 (L) X 1200 (W) X 700 MM (H)

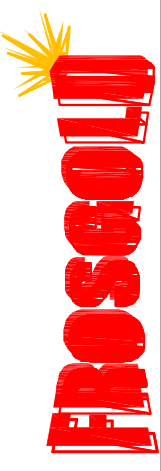
(B)

MODEL : FE9300 XL – FMS

SIZE : 23500 (L) X 1200 (W) X 1200 MM (H)



In keeping with our policy of updating products we reserve the right to make improvements or changes without notice.



GREYWATEC ENGINEERING SDN BHD
 12, Jalan TIB 1/3, Taman Industri Bolton
 68100 Batu Caves, Selangor Darul Ehsan
 Tel : 603-6185 9262 (Hunting Line) / Fax : 603-6185 9279
 Email : work@froscoweb.com / sales@froscoweb.com

**GREYWATEC
 PRETREATMENT PLANT
 (MODEL FGWP-103S)
 SIZE : 10 X 10 X 3.5 M (H)
 FLOWRATE : 600 GPM OR EQV
 SUMP PIT : 2 NOS**

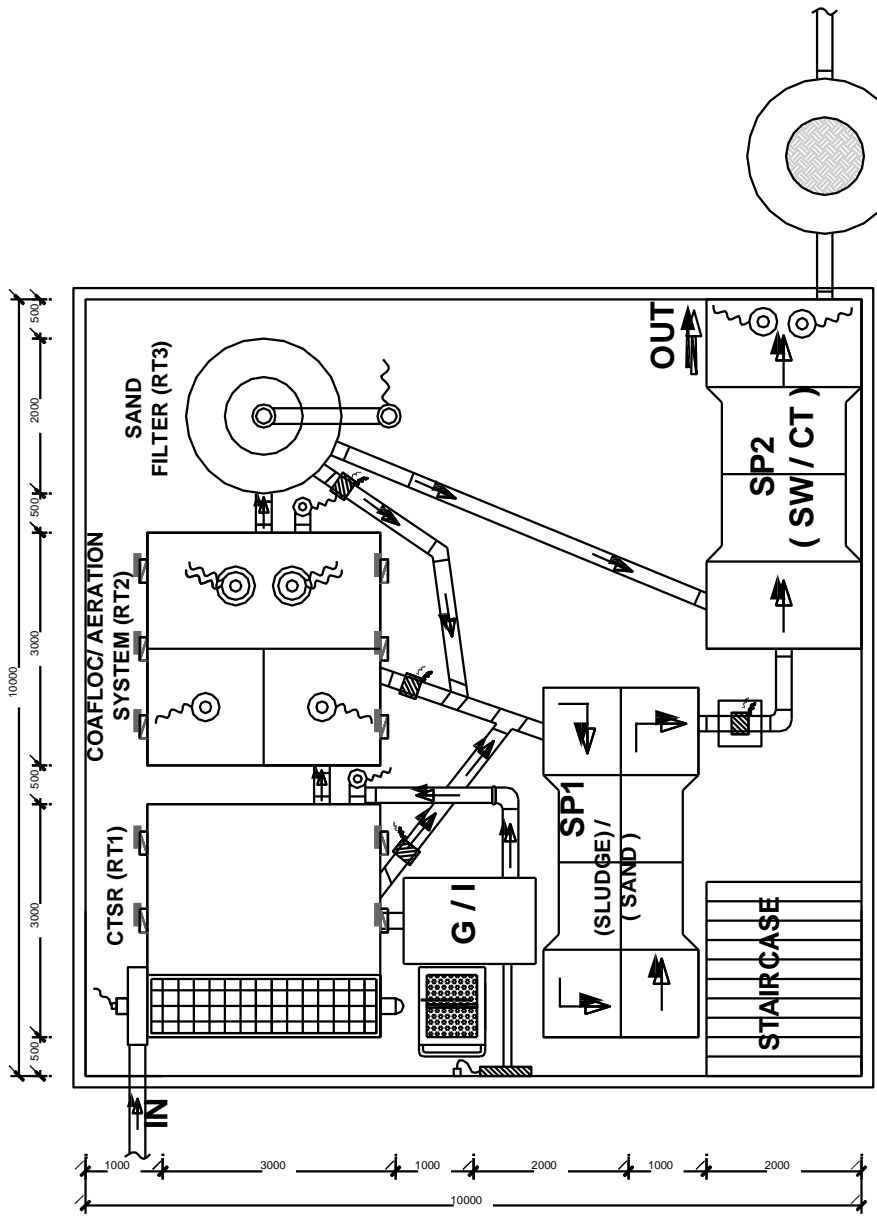
- 1) CTSR (RT1) + GI
- 2) COAFLOC / AERATION (RT2)
- 3) SAND FILTER (RT3)

**PROPOSAL:
 PLAN VIEW
 SECTION VIEW**

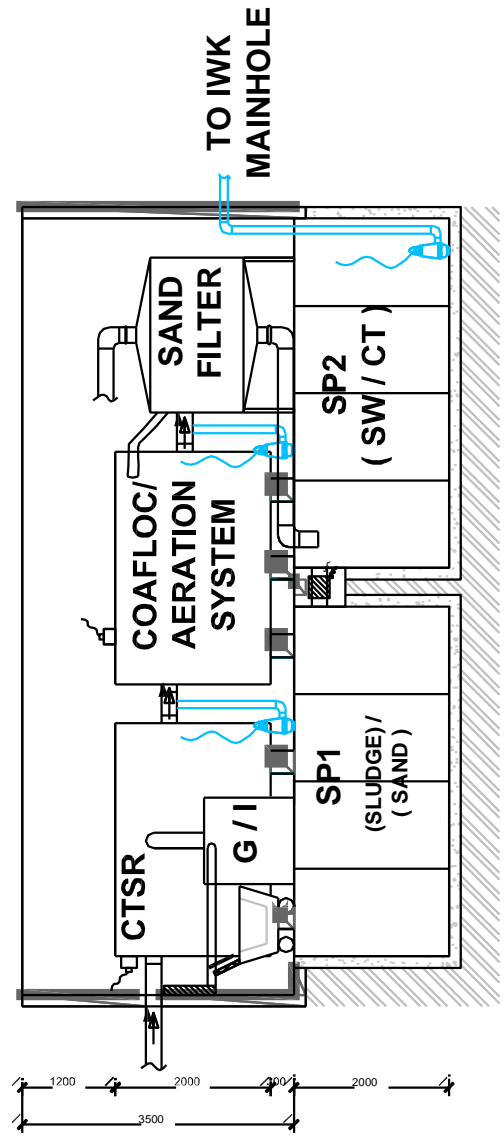
LEGEND

	WATER FLOW
	FROSCO RT1 - COLLECTION TANK SLUDGE REMOVER (CTSR)
	FROSCO RT2 - COAFLOC / AERATION SYSTEM
	FROSCO RT3 - SAND FILTER
	FROSCO SP1 - SUMP PIT 1
	FROSCO SP2 - SUMP PIT 2
DESIGNED BY : K.C. TOH	
DRAWN BY : LILJ MARLINA	
CHECKED BY : ERIC ONG	
DATE : 19th NOVEMBER 2019	
SCALE : 1:100	
DRAWING NO : 8049/R00	
REV: 00	

N.B ALL INTELLECTUAL PROPERTY RIGHTS RESERVED



PLAN VIEW



SECTION VIEW

ALSO AVAILABLE (PTP)

- 1) MODEL : FGWP - 106 (M)
 SIZE : 15 X 12 X 3.5 M (H)
 FLOWRATE APPROX : 2000
 GPM OR EQUIVALENT
 SUMP PIT : 3 NOS
- 2) MODEL : FGWP - 108 (L)
 SIZE : 20 X 15 X 3.5 M (H)
 FLOWRATE APPROX : 3000
 GPM OR EQUIVALENT
 SUMP PIT : 3 NOS

NOTE : MORE LARGER SIZE
 ALSO MAY REQUIRE AND
 AVAILABLE SUBJECT TO THE
 ACTUAL INTAKE PARAMETER,
 FLOWRATE (GPM) M3 VOLUME
 / P.E AND ETC.

(MORE DETAIL REFER OUR
 GREYWATEC CATALOGUE)

In keeping with our policy of updating products we reserve the right to make improvement or changes without notice .



GREYWATEC ENGINEERING SDN BHD
 12, Jalan TIB 1/3, Taman Industri Bolton
 68100 Batu Caves, Selangor Darul Ehsan
 Tel : 603-6185 9262 (Hunting Line) / Fax : 603-6185 9279
 Email : work@froscoweb.com / sales@froscoweb.com

**GREYWATEC
 PRETREATMENT PLANT
 (MODEL FGWP-105 (STRD))
 SIZE : 15 X 10 X 3.5 M (H)
 FLOWRATE : 1000GPM OR EQV
 SUMP PIT : 2 NOS**

- 1) CTSR (RT1) + GI
- 2) COAFLOCCULATION (RT2)
- 3) AERATION TANK (RT3)
- 4) SEDIMENTATION (RT4)
- 5) SAND FILTER (RT5)

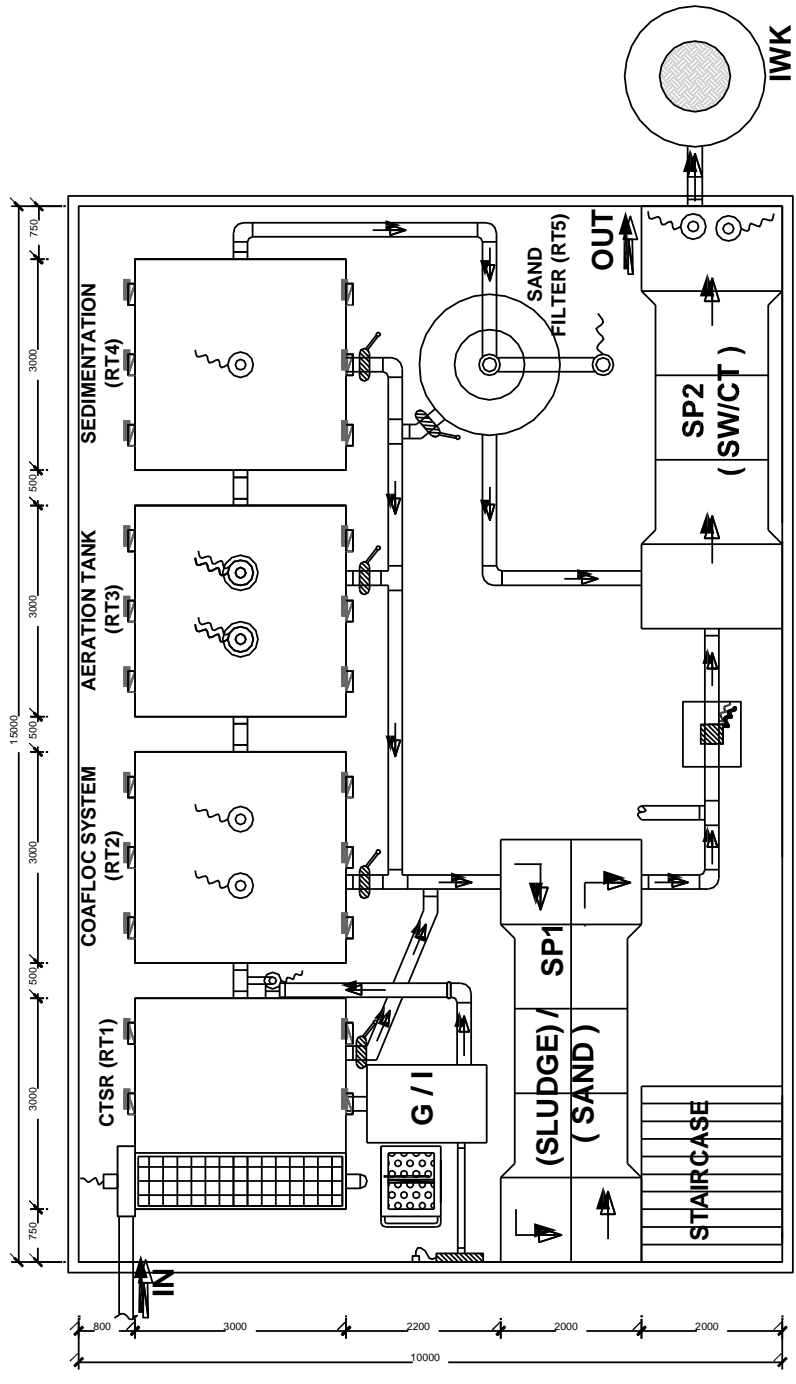
**PROPOSAL:
 PLAN VIEW
 SECTION VIEW**

LEGEND

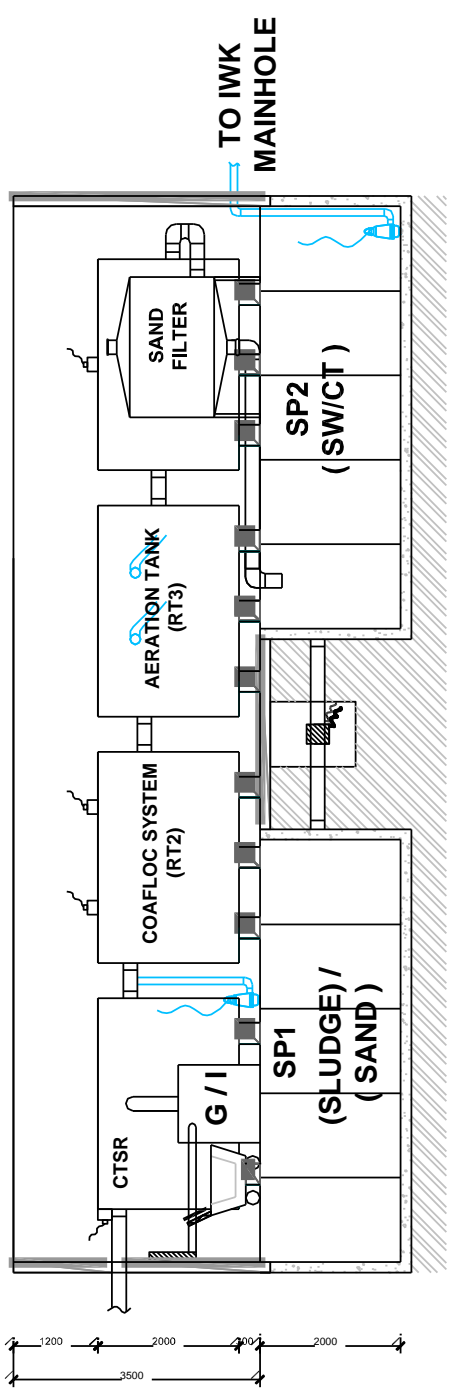
	WATER FLOW
	FROSCO RT1 - COLLECTION TANK SLUDGE REMOVER (CTSR)
	FROSCO RT2 - COAFLOCCULATION
	FROSCO RT3 - AERATION SYSTEM
	FROSCO RT4 - SEDIMENTATION
	FROSCO RT5 - SAND FILTER
	FROSCO SP1 - SUMP PIT 1
	FROSCO SP2 - SUMP PIT 2

DESIGNED BY : K.C. TOH
 DRAWN BY : LILI MARLINA
 CHECKED BY : ERIC ONG
 DATE : 19th NOVEMBER 2019
 SCALE : 1:100
 DRAWING NO : 8049/R00
 REV: 00

N.B ALL INTELLECTUAL PROPERTY RIGHTS RESERVED



PLAN VIEW



SECTION VIEW

ALSO AVAILABLE (PTP)

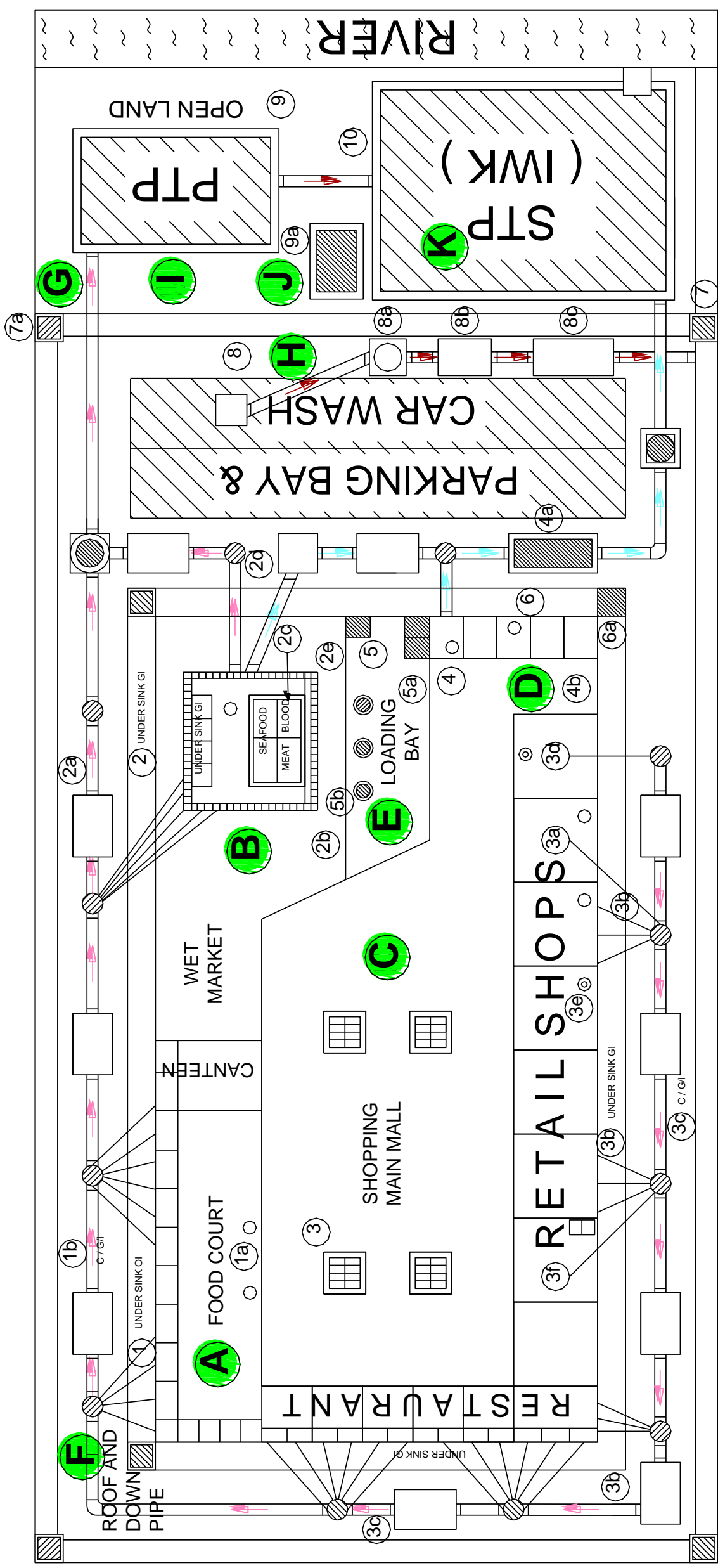
- 1) MODEL : FGWP - 106 (M)
 SIZE : 15 X 12 X 3.5 M (H)
 FLOWRATE APPROX : 2000 GPM OR EQUIVALENT
 SUMP PIT : 3 NOS
- 2) MODEL : FGWP - 108 (L)
 SIZE : 20 X 15 X 3.5 M (H)
 FLOWRATE APPROX : 3000 GPM OR EQUIVALENT
 SUMP PIT : 3 NOS

NOTE : MORE LARGER SIZE ALSO MAY REQUIRE AND AVAILABLE SUBJECT TO THE ACTUAL INTAKE PARAMETER, FLOWRATE (GPM) M3 VOLUME / P.E AND ETC.

(MORE DETAIL REFER OUR GREYWATEC CATALOGUE)

In keeping with our policy of updating products we reserve the right to make improvement or changes without notice .

FROSGOLD ENVIRONMENT ECO-FRIENDLY INTERCEPTOR WASTE SYSTEM (LAYOUT)



PROJECT USE

- * SHOPPING MAIN MALL
- * MIXED DEVELOPMENT
- * HOSPITAL / UNIVERSITY
- * BIG FOOD COURT
- * FOOD PROCESSING PLANT
- * VEHICLE SERVICE CENTRE
- * PASAR BORONG
- * HYPERMARKET
- * CHEMICAL / CEMENT FACTORY

FROSGOLD PRODUCTS

A	FOOD COURT (STALL & FLOOR)	1	UNDER SINK GREASE INTERCEPTOR	D	TOILET (MAN / WOMAN)	4	FLOOR TRAP	I	OPEN LAND AREA	9	GREY WATER PRE-TREATMENT PLANT (PTP)									
		1a	FLOOR TRAP			4a	C/SEPTIC TANK OUTSIDE AREA													
		1b	CENTRALISED OUTSIDE GREASE INTERCEPTOR			4b	BATHROOM ACCESSORIES													
B	WET MARKET AREA (SEAFOOD / MEAT PREPARATION) COUNTER & FLOOR COOKING FOOD)	2	UNDER SINK GREASE INTERCEPTOR	E	LOADING BAY	5	SOLID WASTE SEDIMENT TRAP	J	OPEN LAND AREA	9a	SMOKELESS INCINERATOR SYSTEM (BURN WASTE)									
		2a	CENTRALISED OUTSIDE GREASE INTERCEPTOR			5a	HEAVY DUTY FLOOR GRATING COVER													
		2b	FLOOR GRATING SCUPPER DRAIN			5b	HEAVY DUTY FLOOR TRAP													
		2c	FLOOR TRAP			6	ROOF DRAIN													
		2d	SOLID WASTE SEDIMENT TRAP				6a					RAIN WATER HARVESTING								
		2e	ACCESS FLOOR COVER																	
C	SHOPPING MAIN MALL AREA (RESTAURANT / RETAIL SHOPS / KIOSK / HAIR SALOON / LAUNDRY SHOP)	3	ACCESS FLOOR COVER	F	ROOF & GUTTER (ROOF GARDEN) / (DOWN PIPE)	7	STORMCEPTOR	K	MA	10	IWK (WASTE WATER TREATMENT PLANT)									
		3a	FLOOR TRAP				7a					SYPHONIC STORM DRAIN								
		3b	UNDER SINK GREASE INTERCEPTOR				8					OIL SEPERATOR								
		3c	CENTRALISED OUTSIDE GREASE INTERCEPTOR									8a	SAND SEPERATOR							
		3d	HAIR TRAP									8b	SEDIMENT SOLID SEPERATOR							
		3e	LINT TRAP				8c					NEUTRALIZATION TANK								
		3f	STARCH / MUD TRAP																	
		G	MONSOON DRAIN				H					CAR PARKING BAY AND CAR WASH AREA	G	MONSOON DRAIN	7	STORMCEPTOR	K	MA	10	IWK (WASTE WATER TREATMENT PLANT)
																7a				
8	OIL SEPERATOR																			
H	CAR PARKING BAY AND CAR WASH AREA	H	CAR PARKING BAY AND CAR WASH AREA	H	CAR PARKING BAY AND CAR WASH AREA	8	OIL SEPERATOR	K	MA	10	IWK (WASTE WATER TREATMENT PLANT)									
							8a					SAND SEPERATOR								
							8b					SEDIMENT SOLID SEPERATOR								
8c	NEUTRALIZATION TANK																			

NOTE : GREASE INTERCEPTOR INSTALLATION MUST COME WITH CORRECT PIPE SIZE / SUFFICIENT OF THE PIPING GRADIENTS AND SOME INSPECTION CHAMBERS.

PROJECT REFERENCE

Hypermarket

CARREFOUR

1. Carrefour, Sri Petaling, Kuala Lumpur
2. Carrefour, Ampang Tasik, Kuala Lumpur
3. Carrefour, Kepong, Kuala Lumpur
4. Carrefour, Klang, Selangor

GIANT

1. Giant, Kota Damansara, Selangor
2. Giant, Bandar Kinrara, Puchong, Selangor
3. Giant, Putra Height, Subang Jaya, Selangor
4. Giant, Sri Manjung, Perak

AEON / JUSCO

1. Aeon / Jusco, AU2 Setiawangsa, Kuala Lumpur
2. Aeon / Jusco, Bukit Tinggi Klang, Selangor
3. Aeon / Jusco, Bandaraya, Melaka
4. Aeon / Jusco, Desa Tebrau, Johor Bharu

MYDIN

1. Mydin Subang Jaya, Selangor
2. Mydin Kuala Terengganu, Terengganu
3. Mydin Melaka International Trade Centre (MITC), Ayer Keroh, Melaka
4. Mydin Kubang Kerian, Kelantan

TESCO

1. Tesco Ampang, Selangor
2. Tesco Bukit Beruntung, Selangor
3. Tesco Rawang, Selangor
4. Tesco Extra Cheras, Kuala Lumpur

WET MARKET

1. Pasar Borong Al-Bukhary, Alor Setar, Kedah
2. Pasar Borong Puteri Mart, Bandar Puteri Mart, Puchong, Selangor
3. Pasar Borong DBKL, Kampung Datuk Keramat, Kuala Lumpur
4. Pasar Borong Rawang, Selangor

SHOPPING COMPLEX

1. Berjaya Times Square, Kuala Lumpur
2. Midvalley Megamall, Kuala Lumpur
3. Pavillion Shopping Mall, Kuala Lumpur
4. Queensbay Mall, Bayan Lepas, Pulau Pinang
5. Vattanac Capital, Cambodia

Hotel / Resort

1. Impiana KLCC Hotel & Spa, Kuala Lumpur
2. JW Marriot Hotel (IOI Resort), Sepang, Selangor
3. Palm Tree Hotel, Sepang, Selangor
4. Pullman Hotel (Alam Warisan), Precint 5, Putrajaya

GOVERNMENT STATUTORY

1. Deputy Prime Minister's Office, Putrajaya
2. Istana Negara, Jalan Duta , Kuala Lumpur
3. Federal Land Development Authority (FELDA), Kuala Lumpur
4. Police Office (PDRM), Bukit Aman, Kuala Lumpur

TRANSPORT TERMINAL / STATION

1. Depot Keretapi (KTM), Klang, Selangor
2. KL Sentral, Kuala Lumpur
3. Kuala Lumpur International Airport (KLIA), Sepang, Selangor
4. Low Cost Carrier Terminal (LCCT), Sepang, Selangor

HOSPITAL

1. Hospital Angkatan Tentera, Setapak, Kuala Lumpur
2. Hospital Sungai Buloh, Selangor
3. Hospital Universiti Kebangsaan Malaysia (HUKM), Cheras, Kuala Lumpur
4. Sime Darby Medical Centre (SJMC), Subang Jaya, Selangor

FACTORY

1. Continental Sime Tyre, Petaling Jaya, Selangor
2. F&N Factory, Kilang Tenusu, Pelabuhan Klang, Selangor
3. Lynas Malaysia Sdn. Bhd., Kuantan, Pahang
4. Yakult Factory, Seremban, Negeri Sembilan

SCHOOL / UNIVERSITY

1. Maktab Rendah Sains Mara (MRSM), Alor Gajah, Melaka
2. Multimedia University (MMU), Cyberjaya
3. Politeknik Sultan Haji Ahmad Shah, Kuantan, Pahang
4. Universiti Malaya (UM), Kuala Lumpur

WELL ESTABLISHED BRANDS
IN GREASE / OIL AND WASTE
WATER MANAGEMENT
SYSTEM FOR THE PROJECTS
IN THE MARKET

FROSGOLD

ASSOCIATED BRAND :

FROSCO

GREYWATEC
PRETREATMENT PLANT SYSTEM

CLEARFLOW

FOSSCO tech

 **VTSB TRADING**

In keeping with our policy of updating products we reserve the right
To make improvements or changes without notice.